



judo - jujitsu - karate - taekwondo - boxing - mma



TECHNOLOGIES



I-COMFORT +

Technology that enhances protection through an anti-skid and hygienic covering and comfortable, hypoallergenic materials.



PU3G is a material that looks, feels and performs like leather. Extremely strong, PU3G can continually absorb perspiration while remaining supple and impervious to cracking.



AERO PUNCH TECHNOLOGY

Technology that includes double air channels supported by polyflex bars for maximum protection and impact absorption.



STRAP-UP TECHNIC

New and exclusive system to provide a more rapid and precise fitting of boxing gloves.



I-PROTECH+

Exclusive to adidas this technology features an Intelligent mould structure with additional integrated



I-PROTECH

Exclusive to adidas, this new intelligent mould structure offers superior comfort and protection against injuries.



CLIMACOOOL®

Technology that provides ventilation and regulates temperature and perspiration thanks to highly efficient materials that optimise performance.



RESISTANCE +20%

Stretch tests have demonstrated that polycotton is 20% stronger, against the same force and with the same density of weave per m², and shrinks less after the first washing (30°C) by 15% (compared to 100 cotton).



GRAVITY TECHNOLOGY

Exclusive cushion-sole system that enhances feet comfort and improves shock absorption during movements.



ADIFLEX

Innovative and intelligent material ADIFLEX that is stretchable in the direction of movements only.



ADIWEAR

Molded Tongue Innovative, 3D, pre-shaped tongue provides unmatched instep comfort and support
Full-length Outsole Boxing-engineered, adiWEAR outsole with heel, sidewall, and forefoot wraps for durability.



POWERWEB

PowerWEB Support and amplify natural sports movements through the use of strategically placed prints.



TORSION SYSTEM

Torsion System Torsion element for enhanced midfoot support.



CLIMALITE

CLIMALITE® Soft, lightweight fabric for superior moisture management.

EDITORIAL

2012 : adidas innovates once again in combat sports.

Today, you will discover throughout this catalogue a completely new line of products for your sport, which will allow you to achieve your maximum potential and your best sports performance.

The adidas brand has proudly sponsored major sporting events such as the 2008 Olympic Games in Beijing (adidas supplied gloves and headguards for Beijing 2008 Olympics exclusively), the World Amateur Boxing Championships (2011 Astana, 2009 Milano), and the World Taekwondo Panamerican Qualifying Event for London Olympic Games (2011 Mexico).

adidas will be again the sole equipment supplier for taekwondo and boxing for the London Olympic Games 2012.

Many international federations, top national teams and prominent athletes trust the adidas brand worldwide: AIBA, International Judo Federation, European Judo Union, WKF-World Karate Federation, WAKO, World Taekwondo Federation.

Thanks to our close relationships with sportsmen and women all over the world, the adidas Research & Development Department has introduced many innovations to satisfy each athletes' needs, including :

- The majority of adidas boxing gloves are made of an IMF (Intelligent Moulded Foam),
- I-PROTECH+® technology gel gives high absorption capacity to training gloves,
- ClimaCOOL® technology permits better ventilation to boxing training equipment and boxing, karate and taekwondo apparels,
- I-COMFORT+ now used in most of the adidas boxing headguards and MMA gloves, consists of an antiskid and hygienic lining material.
- boxing shoes get advantage of technologies such as adiWEAR outsole with heel, sidewall, and forefoot wraps for durability or Torsion System element for enhanced mid foot support.
- boxing apparels are made of CLIMALITE® soft, lightweight fabric for superior moisture management.
- PowerWEB supports and amplifies natural sports movements through the use of strategically placed prints.
- karate and taekwondo suits are made of a unique, new mixed and light material for an extreme fluidity of movement.
- karate protectors respond to the criteria of the World Karate Federation 2012 guidelines with regards to quality and design.
- taekwondo dobok « adiflex » is made of innovative stretchable material, which follows the direction of movement.
- taekwondo dobok « adi-Eco » is made of fabric which is 100% recyclable.
- two judo suits are made in Japan in the pure tradition to answer the coaches needs for an outstanding comfort.
- the high-level judo suits respond to the latest competition rules of International Judo Federation (IJF), having 20% greater resistance to stretching compared to 100% cotton kimonos with the same weave.
- exclusive adizero® comprehensive training line made of shinpads, shin & instep pads, padded t-shirt and shorts, with a high level of shock absorption, which reduces of 76% on average the impact force.

adidas cares about you: our goal remains to enable everyone to access these sports, particularly children, who need to discover them in conditions of optimal safety and comfort.

The adidas team



sole hardware supplier for Taekwondo and Boxing for the London Games

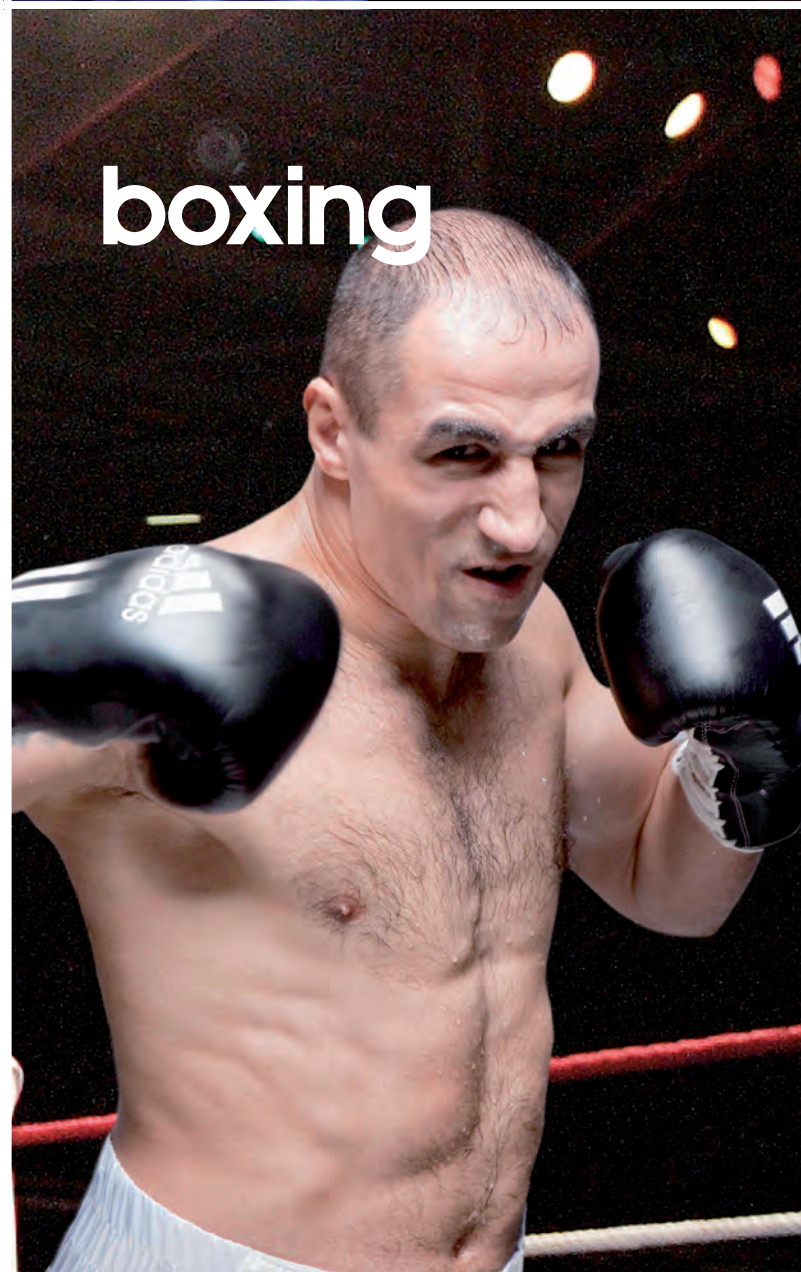
adidas supplied gloves and head guards for Beijing 2008 Olympics & 2009 World Amateur Boxing Championship in Milano/Italy exclusively.

CONTENTS

BOXING	4
boxing gloves	5
amateur boxing gloves	6
pro line	7
combat sports	17
full contact	19
punch bag gloves	20
accessories	22
protectors	25
punching accessories	32
punch bags	36
boxing sports bags	42
textiles	46
fashion	59
mma line	60
shoes	63
JUDO	66
uniforms	67
judo sports bags	74
KARATE	78
uniforms	79
protectors	81
accessories	88
karate sports bags	90
TAEKWONDO	94
doboks	95
shoes	98
protectors	100
accessories	105
taekwondo sports bags	108
TEXTILE	110
brazil line	110
budo spirit line	113



boxing





adiBC06

Professional boxing gloves with laces

Cowhide leather. Polyester foam + horsehair padding.

Colours : Red/White

Sizes : 8, 10 , 12 oz, also exists in 10 oz "XL".



adiBC09

Pro Boxing Glove

Cowhide leather with polyester foam.

Palm lined with soft polyester fabric.

Lace up closing.

Colour : Black.

Sizes: 10 or 12 oz also exists in 10 oz "XL" or 12 oz "XL".



adiBC10

Pro Professional Boxing Gloves

Cowhide leather with polyester foam.

Palm lined with soft polyester fabric.

Lace-up closing.

Colour : Black/Red/White.

Sizes : 8-10-12 oz



adiBC04

Competition Boxing Gloves

Cowhide leather. Padded with injection

moulded foam with extra padded thumb.

Lace-up closing.

Colour : Black.

Sizes : 8, 10 , 12 oz.



AMATEUR BOXING



AIBAG1

Aiba Licensed Boxing Gloves

Quality genuine cowhide leather. Velcro elastic strap closing. Padded with highly absorbent 'IMF' technology moulded foam. New comfort padding at thumb and all over palm.
Colours : Blue, red.
Size : 10 oz.



AIBAH1

AIBA Boxing Head Guards with New Top Velcro Closing

Quality genuine cowhide leather with hi-tec japanese Amara lining. Light weight cushion foam padding. Double leather & scratch strap back closing. PU / scratch strap top closing. CE approved.
Colours: Blue, red.
Sizes: S to XL.



adiBP03

Hand wraps

100% stretchable woven tape. Attached thumb. Closing system by velcro strap.
Colours : Black - Yellow - Red - Blue - White.
Length : 255 cm - 350 cm - 450 cm.
Width : 5 cm.

PRO LINE



adiBC03

Hi-Tec Training Boxing Glove

Cowhide leather & PU palm/strap. Padded with injection moulded foam with contoured shape. Padded finger and palm. Double wide elastic/velcro strap closing. Contrast stitching woven label on cuff. Colour : Black/Gold. Sizes : 14, 16, 18, 20 oz.



adiBC08

Super Pro Boxing Glove

Cowhide leather & PU palm/strap. Rigid cuff with extra padding with contoured shaped. High compression IMF foam. Padded finger and palm. Closing with double 10 cm elastic/velcro. Colour : Black/Gold. Sizes: 10, 12, 14, 16, 18, 20 oz.





adiBC12

Hi-Tech Training Boxing Gloves

Cowhide leather punch area & PU palm/strap. Perforated palm pannel in middle with mesh moisture wicking palm lined inside. Pu/velcro wrap around strap closing. High compression IMF foam padding.

Colours: Black/White/Red.

Sizes:10, 12, 14, 16 Oz.



adiBC13

Training Boxing Gloves

Cowhide leather punch area & PU palm/strap. Injection moulded foam with I-PROTECH technology. Perforated palm for ventilation. New strap closing with embeded rectangular hook. Pu/velcro wrap around strap closing. High compression IMF foam padding.

Colour : Black/Red/White.

Size : 10, 12, 14, 16 Oz.



adiBHG041

Pro Head Guard

Cowhide leather with hi-tec japanese amara inside lining. Padded with injection moulded foam. Elastic velcro back closing. Velcro adjustable chin strap closing.

Colour : Black/gold.

Sizes : S to XL.



adiBHG031

Training head guard

Cowhide leather and PU. Anti-skid lining based on I-COMFORT + technology. Injection-moulded foam. Closing system : Velcro and wide elastic band at the back of the head guard.

Colour : Black/gold.

Sizes : S to XL.





adiBAC0111

Professional Short Focus Mitts

Hand and shield side in high quality leather. Finger shield with Climacool top and palm in moisture wicking super absorbent, quick drying and anti-stick fabric. Grip ball. Wrist hook and pull strap with velcro. Heavy padded EVA foam.

Colour : Antique brown/gold.
Dimensions : 25x18cm.



CLIMACOOOL



adiBAC0112

Ultimate Short Vacuum Focus Mitt - American Style

Hand and shield side in high quality leather. Grip ball. Leather wrist hook and pull strap with velcro. Padded with soft vacuum foam construction.

Colour : Antique brown/gold.
Dimensions : 25x20cm.



adiBCG01

Belly Protector

Material 'PU 3G' INNOVATION. Padded with light weight and high density soft foam. Adjustable support straps with Velcro closing at the back.

Colour : Black/gold.
Sizes : S/M - L/XL.

PU3G
INNOVATION



adiBAC091

Leather speed striking ball.

Material 100% leather with white trimmings. Laceupclosing. Changeable valve bladder. Inside latex bladder accepts a diflation of +/- 20% over a period of 72 hours, as latex is a natural element. Add air on regular basis. Dimensions : 13 x 20 cm - 15 x 23cm - 18 x 25cm.



adiBAC111

Leather Double End Box Ball

Material 100% leather. White trimmings. Changeable bladder. Lace-up closing. Heavy duty rubber cord with metal «easy latch» and 'S' hooks on two sides. Inside latex bladder accepts a diflation of +/- 20% over a period of 72 hours, as latex is a natural element. Add air on regular basis. Ball height +/- 25 cm.



adiBAC113

Leather Double End Box Ball

Material 100% leather. Changeable bladder. Lace-up closing. Heavy duty rubber cord with metal «easy latch» and 'S' hooks on two sides. Inside latex bladder accepts a diflation of +/- 20% over a period of 72 hours, as latex is a natural element. Add air on regular basis. Colour : Black/gold. Ball height +/- 15 cm.





adiSS01

Material 100% nylon fabric. Long sleeves. Wide 'baggy' cutting. Shiny fabric. Elasticated wrists and ankles. «adidas boxing club» crown optic on front of jacket and pants.

Colours : Black/gold.

Size : Large - XXL.



adiBAC16

Top quality leather punching bag

Top quality leather. Fatter 'US' style . Suspended by four chains and swivel. Reinforced straps. "Selflocking" zipper opening on top of bag.

Dimensions : 80 x 40 - 120 x 40 - 150 x 40 cm.

ELECTRONICALLY SCANNED FOR YOUR PROTECTION



adiBAC24

Uppercut Bag

Material 100% PU. Woven backing. Four part super heavy detachable 0/7 holes with rod welded chains with swivel. D ring attachment with metal easy latch hook. Side zip closing.

ELECTRONICALLY SCANNED FOR YOUR PROTECTION

Dimensions : 81 x 42cm.



adiBAC27

Bodysnatcher Bag

Material 100% PU. Woven backing. Four part 4 wholes with 0 ring and 1 feet long. Super heavy chain with swivel. D ring attachment with metal easy latch hook. Lace top closing.

ELECTRONICALLY SCANNED FOR YOUR PROTECTION

Dimensions : 56 x 61cm.





adiBL06

Training fitness boxing gloves

Outside material in 'PU4G' pin dotted material. Rigid PU/scratch strap closing in 'PU3G' High compression 'IMF' type EVA foam. Contrast stitching. Packed with special PU/polybag with lace-up tightening on top useful to carry on boxing gloves and/or training accessories. Improved rigidity of cuff.

Colours: Black/Gold-White/Gold-White/Red.

Sizes: 8-10-12-14 Oz.

PU3G
INNOVATION



adiBL05

Training fitness Boxing Gloves

'PU 4G' Maya pin-dotted material with ClimaCOOL® mesh area plus full moisture wicking palm. Injection moulded foam. Rigid velcro strap closing.

Colours : Intense blue/white - Purple/White - Black/White

Sizes : 8, 10, 12, 14 oz.



PU3G
INNOVATION

CLIMACOOL®



adiBL04/A

Fitness Glove

'PU3G' Maya with ClimaCOOL® technology: mesh area plus full moisture wicking palm. Injection moulded foam. Retractable Velcro elastic strap closing. Improved rigidity of cuff.

Colours : Pink/white - White/Pink - White/Green - White/Black.

Sizes : 8, 10, 12, 14 oz.



PU3G
INNOVATION

CLIMACOOL®



adiBC021

Competition leather gloves

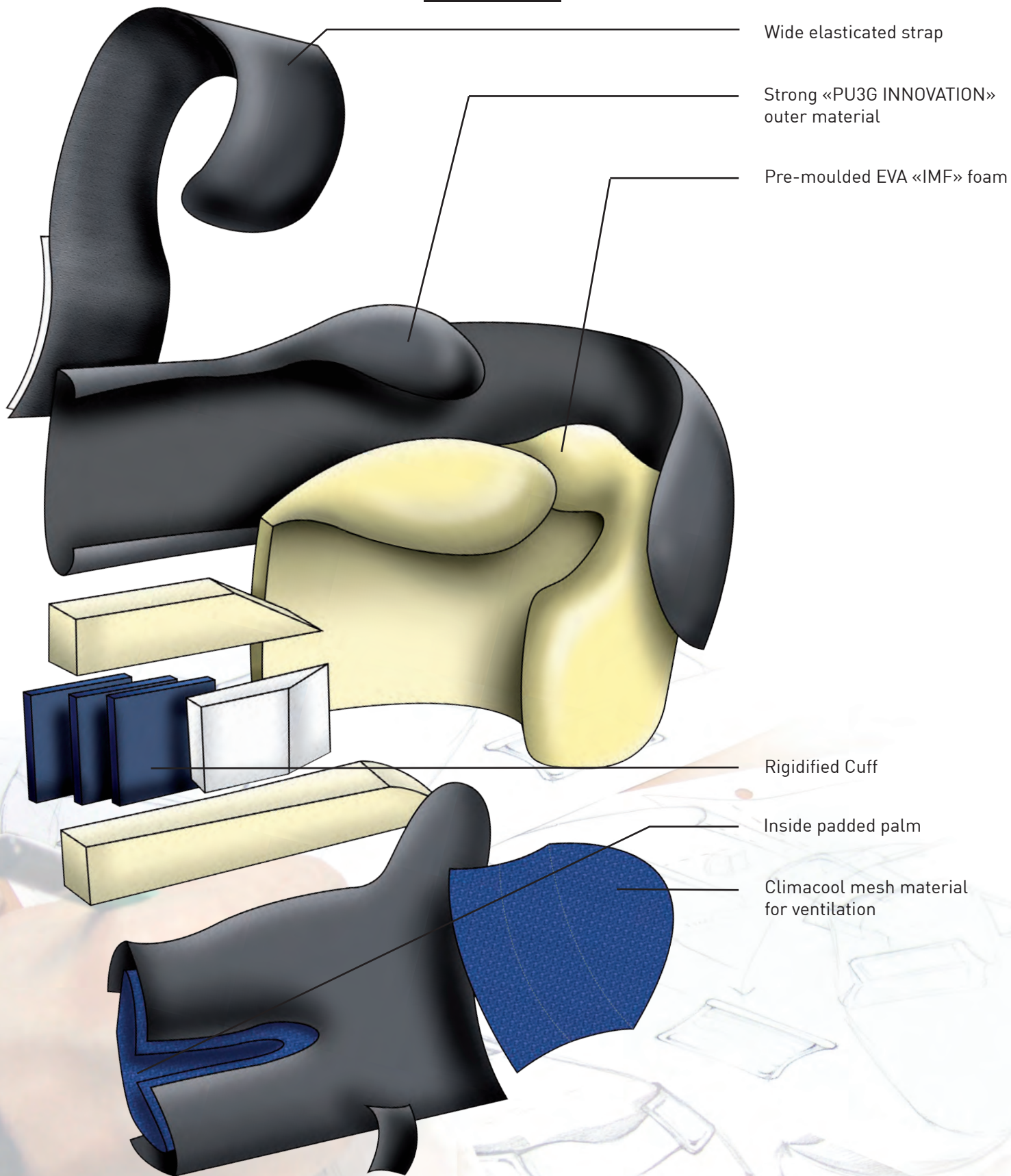
Buff calf leather. PU3G lining. Injection-moulded foam with I-PROTECH + technology integrated gel. Rigid cuff, Velcro closing. White target area directly printed. Improved rigidity of cuff.

Colours : Red/White - Blue/White.

Sizes : 8, 10, 12, 14, 16, 18 oz.



PU3G
INNOVATION



Wide elasticated strap

Strong «PU3G INNOVATION»
outer material

Pre-moulded EVA «IMF» foam

Rigidified Cuff

Inside padded palm

Climacool mesh material
for ventilation

adiBL06



adiBC07

Boxing Gloves

'PU3G' INNOVATION quality. Injection-moulded foam with I-PROTECH technology. ClimaCOOL® technology. Vertical reinforcing band tightening at wrist. Velcro and elastic fastening.

Colours : Black/white or Blue/white.

Firm and improved.

Sizes : 10, 12, 14, 16 oz.



adiBC02

Competition leather gloves

Buff calf leather. PU3G lining. Injection-moulded foam with I-PROTECH + technology integrated gel. Rigid cuff, Velcro closing. Improved rigidity of cuff.

Colours : Red/White - Blue/White.

Sizes : 8, 10, 12, 14, 16, 18 oz.



adiBC01

Training leather Boxing Gloves

Buff calf leather and palm in 'PU 3G' with ClimaCOOL® technology mesh finger area plus full moisture wicking palm inside. Injection moulded foam. Velcro elastic strap closing. Improved rigidity of cuff.

Colour : Black/White.

Sizes : 6, 8, 10, 12, 14, 16, 18 oz.



CLIMACOOOL®



adiBT031

Boxing Gloves

Training 'PU3G' Maya material and ClimaCOOL® technology with mesh area plus full moisture wicking palm inside. Retractable Pu velcro elastic strap closing. Injection moulded foam with air channels and gel. Improved rigidity of cuff.

Colours : Black/White - Blue/White

Sizes : 8, 10, 12, 14, 16 oz.



CLIMACOOOL®



all punch





adiBT02

Boxing Gloves

Training Boxing Glove in PU3G. Rigid strap closing. I-Protech technology with injection moulded foam padding. Improved rigidity of cuff.

Colours : Blue/White-Red/white-Black/white-White/black.

Sizes : 6, 8, 10, 12, 14, 16 oz.



PU3G INNOVATION



adiBT21

Boxing Gloves

Training Boxing Glove in PU3G. Rigid strap closing. I-Protech+ technology with injection moulded foam padding. White target on punch area. Improved rigidity of cuff.

Colour : Blue/White-Red/white.

Sizes : 8, 10, 12, 14, 16 oz.

PU3G INNOVATION



adiBT01

Boxing gloves

Training Boxing Glove in PU3G. Padded with moulded foam padding. Elastic velcro strap closing. Improved rigidity of cuff.

Colour : Black/Red.

Sizes : 6, 8, 10, 12, 14 oz.

PU3G INNOVATION



adiBK01

Kids boxing gloves

Kid Boxing Glove in PU3G. I-Protech technology with injection moulded foam padding. Elastic cuff for firm tightening.

Colours: Red/White - Blue/White.

Sizes : 6, 8 oz.



PU3G INNOVATION



adiBT05

Boxing gloves

Outside material 100% Pu with finger area lining and perforated palm panel in middle. ClimaCOOL® technology. Inner cuff with 3 slits designed padding.

Colours: Red/Black/White.

Sizes: 12 or 14 Oz.

PU3G INNOVATION

CLIMACOOL®



adiBPKIT01

Men's Boxing Set

Ref. ADIBT01 + ADIBP09 + ADIBP03.

ADIBT01 - Training Boxing Glove in PU3G. Padded with moulded foam padding. Elastic velcro strap closing. Colour : Black/Red. Size : 10 oz.

ADIBP03 - 100% stretchable woven tape. Attached thumb. Closing system by velcro strap.

Colour : Black. Width : 5 cm. Length: 255 cm.

ADIBP09 - mouldable single mouth-guard supplied with box.

PU3G
INNOVATION



adiBACWS01

Women's Boxing Set

Boxing gag gloves in '3G' Maya and moulded foam padded. Colour: Black/Pink.

Bag size 50x28cm made from light parachute material with triangle hooks. Zip closing top. Scanned punching bag filled with textiles.



PU3G
INNOVATION



adiBPKITSMU

Men's Boxing Set

Ref. adiBT01 (12 oz) + adiJRW02 + adiBP02

ADIBT01 - Training Boxing Glove in PU3G. Padded with moulded foam padding. Elastic velcro strap closing. Colour : Black/Red/white. Size : 12 oz.

ADIBP02 - 100% polyester fabric. Thumb hole. Stitching between fingers. Wrap around velcro bandage.

Colour : Black/Red.

Size : M.



PU3G
INNOVATION



adiBACJR

Junior Boxing Set

Gloves in Pu hi-tec.

Colour : Black. Size : 6 oz.

Bag size 43x19cm made from black light parachute material with white lining. With three part electric welded chain with swivel, galvanized finish. Zip closing top. Scanned bag filled with textile cuttings.

PU3G
INNOVATION



adiCSG041

Fight Glove

Hitting area in genuine leather. Other parts in PU lined with black polyester foam. Padded with shaped light weight EVA foam with Gel. Inner palm lined with new I-Comfort+ dopling quick drying and anti slip fabric. Smaller wrap around PU/scratch strap.
Colours: Red/Black - Black - Yellow/Black
Pink/Black - Blue/Black.
Sizes: S, M, L, XL.



adiCSG061

Training Glove leather

Hitting area in genuine leather. Other parts in pin-dotted PU. Inner palm lined with new I-Comfort+ dopling quick drying and anti slip fabric. Finger with reinforcement and palm also lined from underneath.
Colour: Black/White.
Sizes: S, M, L, XL.



adiCSG091

Competition/ Training glove

Hitting area in cowhide genuine leather. Other parts in PU. Light weight EVA foam. Smaller wrap around scratch/PU strap.
Colours: Red/White.
Sizes: S, M, L, XL.





adiCSG07

Traditional Grappling Glove

PU material with palm lined with polyester. Velcro strap closing. EVA foam padding.
 Colour : Black/Red trim.
 Sizes : Junior - Regular - Large.



adiCSG08

Grappling Training Glove

PU material. EVA foam padding. Wrap around velcro strap closing.
 Colours : Black/white - Pink.
 Sizes : Regular - Large - X/Large.



adiTSN01

Thai Shin-n-step pad

High-density EVA foam. Exterior in 'PU3G' INNOVATION material. Lined with heavy black canvas. 4 mm gel protection over the shin area. Adjustable closing system with dual Velcro bands. Removable instep pad.
 Colours : Black/white.
 Sizes : S/M - L/XL - XXL.



adiBHG051

Combat Sports Headguard

Material PU. Inside with I-Comfort+ dopling quick drying/anti-slip fabric. Top of head padded with 8 mm EVA foam. Back with fixed elastic easy wear adjustment.
 Colour : Black.
 Sizes : XS/S, M, L, XL.



FULL
CONTACT



adiBFC01

Semi-contact contact gloves

PU outside material. I-Protech technology with IMF injection moulded foam. New ergonomic shape. Anti-skid lining based on I-COMFORT + technology. Wrap around elastic/velcro fastening.

Colours : Red - Blue - Black - white.
Sizes : XXS to XL.



adiBP04

Super Safety Kicks Boots

Material 'PU 3G' INNOVATION with high density injection moulded PU foam. Elastic velcro closing. Anti-skid lining based on I-COMFORT+ technology.

Colours : Blue - Red - Black - white.
Sizes : XXS, XS, S, M, L, XL, XXL.



adiGSS011

Super Pro Shin Instep pad

Outside material in 100% PU and inside lined with new I-Comfort+ doping quick drying and anti slip fabric. Padded with IMF type EVA foam. PU/scratch back of leg doubled straps with embedded rectangular closing. Rubber.

Colour: black/white.
Sizes: S/M - L/XL.



adiGSS012

Eco-Shin Instep Guard «Economy»

Outside material in 'PU3G' lined with black neoprene for comfort feel. Padded with injection moulded foam and instep part. PU/scratch double strap with embedded rectangular hook closing.

Colours: Black/White.
Sizes: Regular or Large.



PUNCH BAG GLOVES



adiBGS04

Leather Pro Punch bag gloves

Cowhide leather and inner lining 'PU3G' INNOVATION. Injection-moulded foam with I-PROTECH technology. Elastic+Velcro closing.
Colour : Black/white.
Sizes : S/M - L/XL.



adiBGS05

Punch Bag Gloves

Material 'PU3G' Maya INNOVATION. Injection-moulded foam with i-PROTECH technology. Elastic + velcro fastening. ClimaCOOL® technology for optimal ventilation and reduced humidity.
Colour : Black/white.
Sizes : S/M - L/XL.





adiBGS01

Punch Bag Gloves

Material 100% 'PU3G' INNOVATION. Injection moulded foam with I-PROTECH technology. ClimaCOOL® technology for optimal ventilation and reduced humidity.

Cuff with elasticated wrist band.

Colour : Black/White/Red.

Sizes : S/M - L/XL.



adiBGS01/B

Punch Bag Gloves

Material 100% 'PU3G' INNOVATION. Injection moulded foam with I-PROTECH technology. ClimaCOOL® technology for optimal ventilation and reduced humidity.

Cuff with elasticated wrist band.

Colours : White/Black - Pink/White - White/Green - White/Pink.

Sizes : S/M-L/XL.



adiBGS06

Fitness Bag Gloves

Training bag gloves. Material 'PU 4G' pin-dotted with mesh finger area plus full moisture wicking palm inside. IMF foam padding. Elasticated wrist. Direct «adidas Boxing Club Crown» print on wrist strap. Colours: Intense blue/white - Purple/White - Black/White.

Sizes: S/M - L/XL.





adiBW01

Weight Shadow Boxing Gloves
 Made from neoprene with mixed iron ball knuckle ; neoprene thumb and moisture wicking breathable palm thanks to ventilation holes with ClimaCOOL® technology. Velcro closing strap. Printed logo. Pull-up loop. Not to be used under gloves.
 Colour : Black.
 Sizes: S/M - L/XL. Weights: 0,5 kg - 1 kg.

CLIMACOOL®



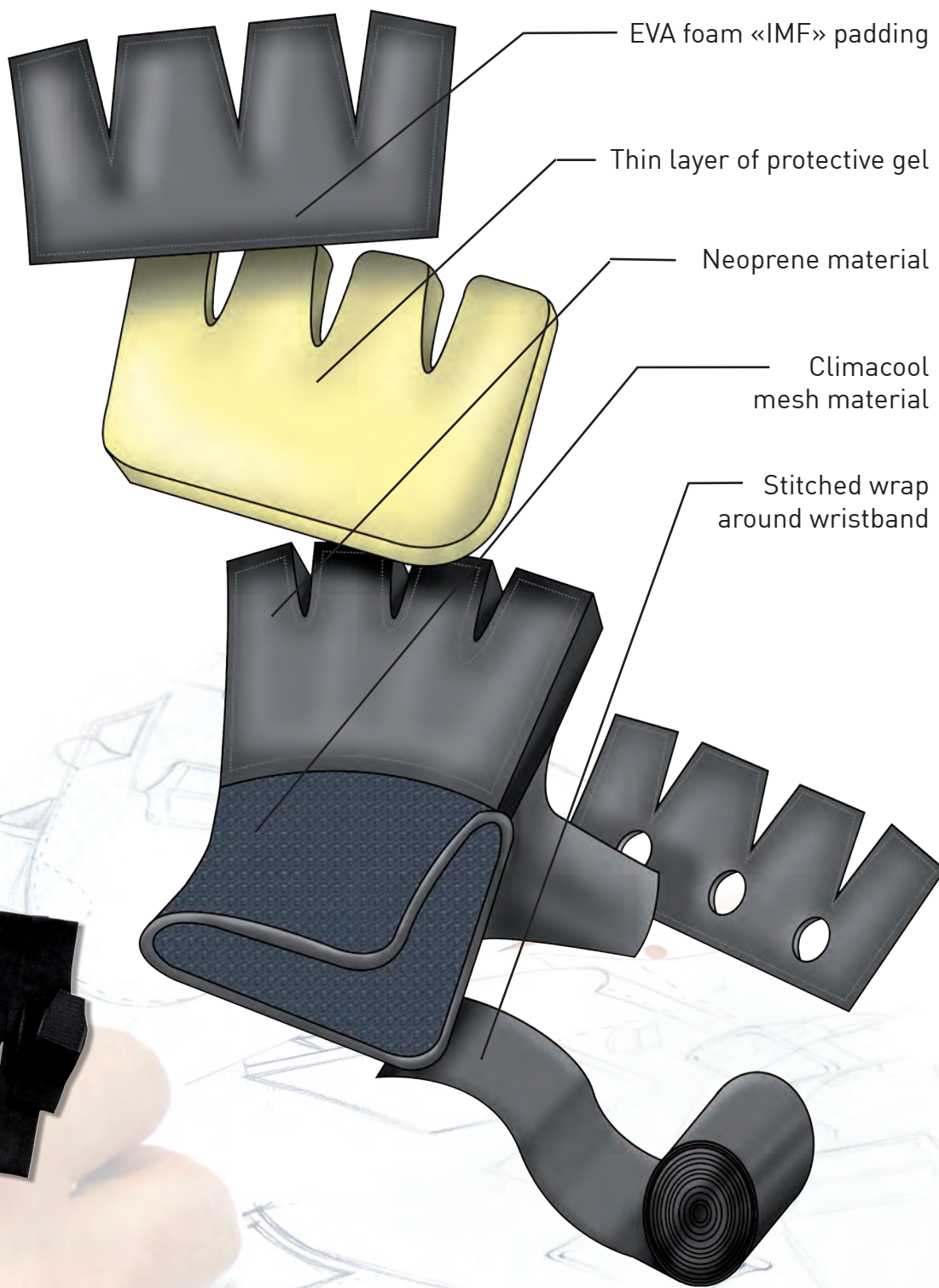
adiUG01

Inner comfort gloves
 100% cotton fabric.
 Colour : White.
 One size fits all.



adiBP03

Hand wraps
 100% stretchable woven tape. Attached thumb. Closing system by velcro strap.
 Colours : Black - Yellow - Red - Blue - White.
 Length : 255 cm - 350 cm - 450 cm.
 Width : 5 cm.



adiBP012

Protective inner mitts
New black neoprene model with 10 mm layer of gel over the knuckle area. ClimaCOOL® technology for optimal ventilation and reduced humidity. Offers optimal protection of metacarpals. 200 cm stitched wrap around polyester woven wristband.
Colour : Black.
Sizes : S/M - L/XL.

CLIMA COOL



adiBP02**Padded Inner Mitts**

100% polyester fabric. Thumb hole. Stitching between fingers.
Wrap around velcro bandage.
Colour : Black/Yellow.
Sizes : S to XL.

CE



adiBP021**Padded Super Inner Mitts**

100% polyester woven fabric. Thumb hole. Inner layer of gel protects the metacarpals. Stitching between fingers.
Wrap around Velcro bandage.
Colour : Blue/White.
Sizes : S to XL.

CE



adiBP09**Single mouth guard**

Thermoformable. Box included.
Sizes : Junior - Senior.

CE



adiBP10**Double mouth guard**

Thermoformable. Box included.
Size : Senior.

CE



25



adiBHG041

Pro Head Guard

Cowhide leather with hi-tec japanese amara inside lining. Padded with injection moulded foam. Elastic velcro back closing. Velcro adjustable chin strap closing.
 Colour : Black/gold.
 Sizes : S to XL.

adiBHG031

Training head guard

Cowhide leather and PU. Anti-skid lining based on I-COMFORT + technology. Injection-moulded foam. Closing system : Velcro and wide elastic band at the back of the head guard.
 Colour : Black/gold.
 Sizes : S to XL.





adiBH022

Training Head Guard : NEW DESIGN

Outside material 100% PU with inside new I-Comfort+ dopling quick drying and anti slip fabric. Thick padding with light weight high end foam padding. Scratch strap back of the head closing. Rigid straps plus cushion comfort padding on top of head.

Colour: black/white/red.

Sizes: S, M, L, XL.

PU3G INNOVATION



adiBH023

Training Head Guard w/chin protector : NEW DESIGN

Outside material 100% PU with inside new I-Comfort+ dopling quick drying and anti slip fabric. Thick padding with light weight high end foam padding. Scratch strap back of the head closing. Rigid straps plus cushion comfort padding on top of head.

Colour: black/white - red/white - blue/white.

Sizes: XXS to XL.

PU3G INNOVATION



adiBH024

Training Head Guard w/ Top Protection : NEW DESIGN

Outside material 100% PU with inside new I-Comfort+ dopling quick drying and anti slip fabric. Top of head with EVA foam protection. Padded with ultra light weight high end foam padding. Scratch strap back of the head closing.

Colour: black - red - blue.

Sizes: XS, S, M, L, XL.

PU3G INNOVATION



adiBH01

Initiation head guard

Outside material 100% PU3G INNOVATION. Injection-moulded foam. Adjustment system with elastic band and Velcro strap at the back of the headguard. Adjustable Velcro/PU jaw strap.

Colours : Red - Blue.

Sizes : XXS to XL.

PU3G INNOVATION





adiBP11

Pro Men's groin guard

Top quality buffalo hide and interior PU. High-density padding. Reinforced cup. Closing system. leather strap and Velcro at the back of the guard.

Colour : Black

Sizes : S, M, L, XL.



adiBP05

Training anatomical groin guard

Exterior 100% PU3G INNOVATION and interior PU. High density foam lining with gel. CP4 plastic cup. Elastic band and dual Velcro straps.

Colour : White.

Sizes : S, M, L, XL.



adiBP06

Training groin guard

Wide elastic support band. Towel material inside waist band for comfort. ClimaCOOL® technology for optimal ventilation and reduced humidity. Reinforced plastic cup.

Colour : White/black/red.

Sizes : S, M, L, XL.





adiBP20

Shin pad

Characteristics : see description on right page.
Elastics at back of shin for better tightening.
Colour: black.
Sizes: S, M, L, XL.



adiBP21

Shin and instep pad

Characteristics : see description on right page.
Elastics at back of shin for better tightening.
Colour: black.
Sizes: S, M, L, XL.



adiBP22

Padded s/s t-shirt

Characteristics : see description on right page.
Colour: black.
Sizes: S, M, L, XL.



adiBP23

Padded short

Characteristics : see description on right page.
Elasticated waist band.
Colour: black.
Sizes: S, M, L, XL.

**Line specifications :**

Outer material: resistant and elasticated polyester material. Ergonomic shape thanks to close-fit cut. Flat-lock stitchings for comfort when worn.

Inside material: separated blocks of new generation of «EVA» foam with a high level of shock absorption. Laboratory tests* have shown that this protective item has a shock absorption capacity which reduces of 76% -in average- the impact force (test reference: 3 joules) on the protected zones being tested.

*Test was made in comparison with free of protection zones by « Critt Sport Loisirs -Research, Innovation and Technology Center Laboratory » - France.



adiCT011

Elbow Pad P.U.

Black polyester neoprene.
Flat lock stitching. Hi tech
PU striking areas with black
trimming. EVA foam padding.
Colour : Black/Silver trim.
Sizes : S/M - L/XL.



adiCT012

Knee Pad P.U.

Black polyester neoprene.
Flat lock stitching. Hi tech
PU striking areas with black
trimming. EVA foam padding.
Colour : Black/Silver trim.
Sizes : S/M - L/XL.



adiCT01

Thai reversible elbow pad

Woven stretch polyester.
EVA soft padding.
Colours : Red - Blue.
One size fits all.



adiCHT01

Thai reversible ankle pad

Elastic woven polyester.
Colours: red/blue.
One size fits all.



adiGSS011

Pro Shin and Instep Pad

Resistant PU cover. Padded with injection mould super resistant
EVA foam. Straps with Velcro rear closing at back of calf.
Colour : Black/Silver trim.
Sizes : S/M - L/XL.



adiTSN01

Thai Shin and Instep pad

High-density EVA foam. Exterior in PU3G. Lined with heavy
black canvas. Gel protection over the shin area. Adjustable
closing system with dual Velcro bands. Removable instep
pad.
Colours : Black/White.
Sizes : S/M - L/XL - XXL.





661.25

PU shin pad

Resistant PU cover. Inside material: EVA foam. Triple Velcro closing. Ergonomic shape.
Colours: black, red, blue or white.
Sizes: XS to XL.



adiBP07

Shin pad

Polyester cover. EVA foam padding. Adjustable Velcro strap.
Colours : White - Blue - Red.
Sizes : XXS, XS, S, M, L, XL.



adiBP08

Shin-n-step pad

Polyester cover. EVA foam padding. Adjustable Velcro strap.
Colours : White - Blue - Red.
Sizes : XXS, XS, S, M, L, XL.



adiP01

Reversible body protector

100% PU3G INNOVATION.
Adjustable support straps with Velcro closing.
High-density EVA foam padding.
Colour : Blue/red (reversible).
Sizes: S, M, L, XL



adiP02

Coach Body Protector

Material 'PU 3G' INNOVATION. Inside polyester lining. Nylon straps closing with plastic snap-on buckles. Padded with embossed double protection foam.
Colour : Black/Blue.
Size : Std.



PUNCHING
ACCESSORIES



adiBAC01

Short Focus Mitts

Exterior 100% PU3G INNOVATION.
EVA foam padding with Polyflex® bars. Padded palm.
Velcro adjustable wrist strap. Grip ball. AeroPunch®
technology for optimal protection and impact absorption.
Length : 25cm.

adiBAC011

Short Focus Mitts «Economy»

Exterior 100% PU with soft polyester lining.
EVA and 'polymax' foam.
Padded palm with grip ball.
Length : 25cm.



adiBAC012

Pro Leather Short Focus Mitts

Exterior in top quality leather shaped high density thick foam padding with palm and wrist contour pad. White contrast stitching. Padded palm with grip ball. Length : 25cm.



adiBAC011

Professional leather Short Focus Mitts

Hand and shield side in high quality leather. Finger shield with Climacool® top and palm in moisture wicking super absorbent, quick drying and anti-stick fabric. Grip ball. Wrist hook and pull strap with velcro. Heavy padded EVA foam. Colour : Antique brown. Dimensions : 25x18cm.



CLIMACOOOL



adiBAC0112

Ultimate Short Vacuum Focus Mitt

Hand and shield side in high quality leather. Grip ball. Leather wrist hook and pull strap with velcro. Padded with soft vacuum foam construction for better shock absorption, as per «American» style vacuum pads. Colour : Antique brown. Dimensions : 25x20cm.



adiBAC013

Precision Focus Mitts

Exterior 100% PU. EVA foam padding with extra padding zone at back of mitt. Velcro adjustable wrist strap. Strong shock absorption for heavy duty using. Diagonal stripes on front and logo at back of mitt. Length: 25 cm.



adiBAC031

Square Hand Target

Exterior 100% PU 3G INNOVATION with woven backing. Nylon handle on top plus nylon/plastic one at back for handling. Polymax foam padding. Zip closing. Dimensions : 30 x 23 x 8 cm.



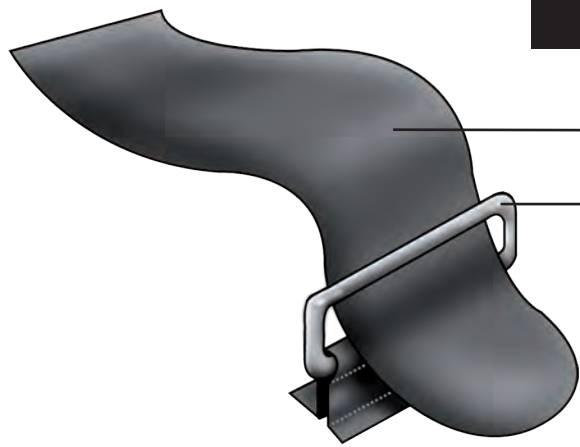
adiBAC02

Long Focus Mitts

Exterior 100% PU3G INNOVATION. "Amara" Japanese fabric palm. EVA foam padding with Polyflex® bars. Velcro adjustable wrist strap. AeroPunch® technology for optimal protection and impact absorption. Length: 35cm.

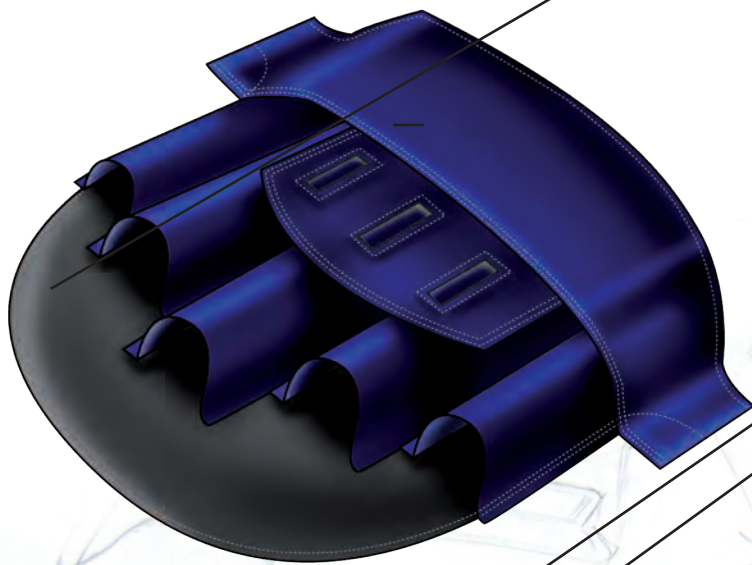


AERO PUNCH TECHNOLOGY®



Strong wrist support

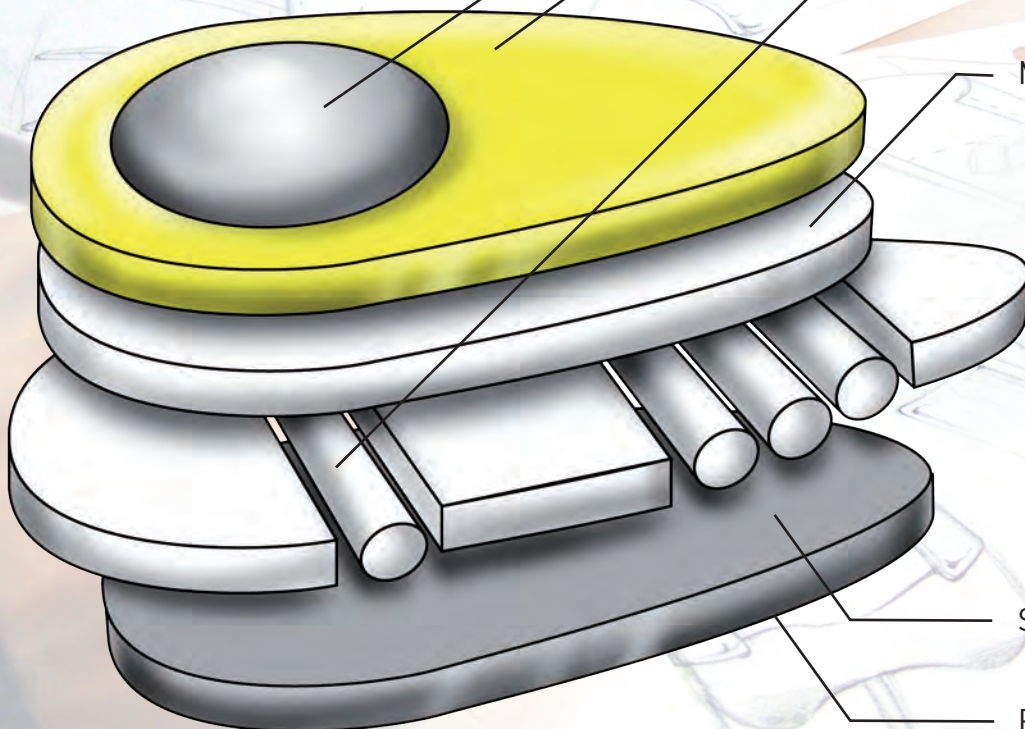
Tightening buckle



I-Comfort+ quick-dry & anti-slip fabric

Grip ball at palm

Comfort and absorbing foam



Polyflex bars as cushion area

Med-EVA foam

Strongly resistant EVA foam

PU hi-tech material cover

Aeropunch technology



adiTHK01

Iranian style sparing shield

Outside palm material 100% 'PU INNOVATION'.

Reinforced handles.

Padded with polymax foam.

Black trim.

Colour: black.

Size: 42 x 24 x 9 cm aproximately.



adiBAC31

Econo Thai Pad

100% PU with woven backing. Nylon velcro strap fastening. Reinforced handle at back. Polymax foam padding.

Colour : Black.

Dimensions : 42 x 21 x 10 cm aproximately.



adiBAC051

Extra curved Kick-Shield

PU3G Maya in plain black with special backing. Nylon straps. Filled with aero foam padding with side vents to provide vaccum effect. Zip closing.

Colour : Black.

Dimensions : 80x35x15cm aproximately.

PU3G
INNOVATION



adiBAC06

Curved Kick-Shield

Exterior 100% PU 3G Maya with special backing. Nylon straps. Filled with aero foam padding with side vents to provide vaccum effect. Zip closing.

Colour : Black.

Dimensions : 65x45x14cm aproximately.

PU3G
INNOVATION

PUNCH BAGS



adiBAC091

Leather speed striking ball.

Material 100% leather with white trimmings. Lace up closing. Changeable valve bladder. Inside latex bladder accepts a diflation of +/- 20% over a period of 72 hours, as latex is a natural element. Add air on regular basis.
Dimensions : 13 x 20 cm - 15 x 23cm - 18 x 25cm.



adiBAC09

Speed striking ball.

Material 100% 'PU3G INNOVATION'. White trimmings. Lace up closing. Changeable valve bladder. Inside latex bladder accepts a diflation of +/- 20% over a period of 72 hours, as latex is a natural element. Add air on regular basis.
Dimensions : 25 x 17 cm - 30 x 20cm.



RT02 / RT03 / RT04

Swivel

Chrome-plated stainless steel, ball bearing movement.
(Non-adidas product)



adiBAC111

Leather Double End Box Ball

Material 100% leather. White trimmings. Changeable bladder. Lace-up closing. Heavy duty rubber cord with metal «easy latch» and 'S' hooks on two sides. Inside latex bladder accepts a diflation of +/- 20% over a period of 72 hours, as latex is a natural element. Add air on regular basis. Ball height +/- 25 cm.



adiBAC113

Leather Double End Box Ball

Material 100% leather. Changeable bladder. Lace-up closing. Heavy duty rubber cord with metal «easy latch» and 'S' hooks on two sides. Inside latex bladder accepts a diflation of +/- 20% over a period of 72 hours, as latex is a natural element. Add air on regular basis. Ball height +/- 15 cm.



adiBAC10

Double End PU Box Ball

Material 'PU 3G' Maya' material. White trimmings. Changeable bladder. Lace-up closing. Heavy duty rubber cord with metal «easy latch» and 'S' hooks on two sides. Inside latex bladder accepts a diflation of +/- 20% over a period of 72 hours, as latex is a natural element. Add air on regular basis. Ball height +/- 25 cm.



adiBAC27

Bodysnatcher Bag

Material 100% PU. Woven backing. Four part 4 wholes with O ring and 1 feet long. Super heavy chain with swivel. D ring attachment with metal easy latch hook. Lace top closing. Scanned bag. Dimensions : 56 x 61cm.



adiBAC26

Leather Medicine Ball

Material split leather with PU quoting for better strength. Filled with cork and crustone. With mesh carry bag. Weight : 3,5 kgs - 5,5 kgs - 6,75 kgs.



adiBAC24

Uppercut Bag

Material 100% PU. Woven backing. Four part super heavy detachable 0/7 holes with rod weided chains with swivel. D ring attachment with metal easy latch hook. Side zip closing. ELECTRONICALLY SCANNED FOR YOUR PROTECTION. Dimensions : 81 x 42cm.



Contents verified by scanner



adiBAC23

Maize punching bag

Material 100% 'PU 3G' Maya punching bag. Suspended by four chains and swivel. Reinforced leather straps. Zipper opening on top of bag. Filled with textile cuttings. Suspended by 4 heavyweight chains.

ELECTRONICALLY SCANNED FOR YOUR PROTECTION
Height: 48 - 60 cm. Bag weight: 8 - 18 - 30 kg ±5%



PU3G
INNOVATION



adiBAC22

Maya uppercut punching bag.

Material 100% 'PU 3G' Maya punching bag. Suspended by four chains and swivel. Reinforced leather straps. Zipper opening on top of bag. Filled with cloth scraps. Option : Full leather material. (adiBAC22L)

Bag dimensions : 92 x 46 x 28 cm.

Bag weight : 28 kg ±5%.

ELECTRONICALLY SCANNED
FOR YOUR PROTECTION



PU3G
INNOVATION



adiBAC19

Tear drop maize punching bag.

Material 100% 'PU 3G' INNOVATION Maya material. Heavy chain attachment reinforced whih leather. Option : Full leather material. (adiBAC19L)

Dimensions : 90 x 30 cm.

Weight : ±20 kg.

ELECTRONICALLY SCANNED FOR YOUR PROTECTION



PU3G
INNOVATION



adiBAC28

Double End Heavy Bag.

Material 100% 'PU 3G' strong material with woven backing. Zipper top. Strong nylon straps with quality hook and ring for hanging.

Colours : Black/Red.

Dimensions : 33 x 82 cm.

ELECTRONICALLY SCANNED FOR YOUR PROTECTION



adiBAC33

Training Heavy Punching Bag

In 2mm nubuck 'HL' '5G' PU cover with non-woven backing. Super heavy four part heavyweight electric welded chain with swivel, galvanized finish. Auto locking slider zipper. Filled with textile cuttings only.

ELECTRONICALLY SCANNED
FOR YOUR PROTECTION

Dimensions: 120x35cm - 140x35 cm



adiBAC25

Fatter Punching Bag 'US' style

Material 100% PU with woven backing. Suspended by four chains and galvanized swivel.

Dimensions : 120 x 40cm-150 x 40 cm.

ELECTRONICALLY SCANNED
FOR YOUR PROTECTION



Contents
verified by
scanner



adiBAC16

Top quality leather punching bag

Buff calf leather. Fatter 'US' style .
Suspended by four chains and swivel.
Reinforced straps. "Selflocking" zipper
opening on top of bag.
Dimensions : 90 x 40 - 120 x 40 -
150 x 40 cm.
ELECTRONICALLY SCANNED
FOR YOUR PROTECTION



adiBAC14

Leather punching bag

Top quality leather. Suspended by four chains and
swivel. Zipper opening on top of bag. Filled with
cloth scraps.
ELECTRONICALLY SCANNED
FOR YOUR PROTECTION
Dimensions : 90 x 30 - 120 x 33 cm.
ELECTRONICALLY SCANNED
FOR YOUR PROTECTION



adiBAC12

Woven "Dymex" nylon punching bag

Black woven nylon. Suspended by four
chains and galvanised swivel. Zipper
opening on top of bag.
Filled with cloth scraps.
Dimensions : 90 x 30 - 120 x 35 -
150 x 33 - 180 x 30cm.
ELECTRONICALLY SCANNED
FOR YOUR PROTECTION



adiBAC11

Lightweight "parachute fabric" punching bag

Black polyester/cotton parachute fabric.
Suspended by four chains and galvanised
swivel. Zipper opening on top of bag. Filled
with cloth scraps.
Dimensions : 90 x 30 - 120 x 30 cm.
ELECTRONICALLY SCANNED
FOR YOUR PROTECTION



adiBAC17/18

PU punching bag

Material 100% PU with woven backing. Suspended
by four chains and galvanized swivel. Auto-locking
zipper on top.
Dimensions :
(adiBAC17) : 120 x 33 cm.
(adiBAC18) : 150 x 33cm - 180 x 30 cm.
ELECTRONICALLY SCANNED
FOR YOUR PROTECTION



adiBAC29

Long Punching Bag

Made of PU strong material with woven
backing. Strong nylon straps with metal
easy latch hook on top.
Colour : Black.
Dimensions : 23 x 120 cm.
ELECTRONICALLY SCANNED
FOR YOUR PROTECTION




Contents
verified by
scanner



adiBAC21

PU punching bag

Material 100% PU 3G INNOVATION 'Maya' with woven backing. Suspended by four chains and galvanized swivel. Auto-locking zipper on top.

Dimensions : 90 x 30cm - 120 x 33 cm - 150 x 33cm - 180 x 30cm.

ELECTRONICALLY SCANNED
FOR YOUR PROTECTION



Contents verified by scanner

adiBAC30

Long Punching Bag

Made of PU strong material with woven backing. Strong nylon straps with metal easy latch hook on top. White targets printed.

Colour : Black.

Dimensions : 190x30 cm - 180 x 30 cm.

ELECTRONICALLY SCANNED
FOR YOUR PROTECTION



adiBAC50

Adjustable punch bag

PU Material and PE for lower part. Colour : Black. Height adjustable.

Dimensions : 35 x 170 cm.
(only from China)



adiCNPT01

Ring corners

100% PU outside and foam padding.

1 set = 2 x white, 1 x red, 1 blue
Colours : Blue - White - Red.



adiJRW01

Wooden handled weighted skipping rope

Made from reinforced wood and leather cord. Japanese ball bearing.

Length : 9ft.



adiJRW02

Wooden handled skipping rope

Made from reinforced wood and nylon cord. Japanese ball bearing.

Length : 9ft.



adiJRW03

Jump Rope
Made from PU durable rope with top-quality weighted ball-bearing.
Colour : Black.



adiJRW03E

Jump Rope Eco model
Made from durable PE rope with weighted ball-bearing.
Colour : Black.



adiMG01

Mini boxing gloves
Wool padding.
Chrome-plated metal clasp.
Assorted colours.



adiBPC02

Mini boxing gloves (pair)
PU Maya. Wool padding. String hanger.
Colours : Black - red.



FT-01

Traditional end-swell
Polished stainless steel. Handle coated with rubber for optimal grip.
(Non-adidas product)



FP-01

Professional end-swell with ice reservoir
Polished stainless steel. Handle coated with rubber for optimal grip.
Ice reservoir.
(Non-adidas product)

BOXING SPORTS BAGS



adiBAG02

Sports bag

Material 100% strong and resistant PU. Large zipper opening.

Convertible into backpack.

Silk screen decoration on sides. Printed 'BOXING' or 'KICK BOXING'.

Colour : Black/white.

Sizes : S (50 x 25 x 25 cm) - M (55 x 29 x 27 cm) - L (67 x 36 x 33 cm).

Also exists in black/white polyester material with ref. ADIBAG01.



adiACC110CS

PU Shiny Sports Bag

Shiny polyester material, zipper. Combat Sport logo printed. One pocket on side with zipper. Adjustable shoulder strap.

Colours : Black - White/Black/Gold - Blue/White.

Sizes : S/ 38x23x16cm - M/38x26.5x20cm - L/46x32x27cm.



adiACC110

PU Shiny Sports Bag

Shiny polyester material, zipper. Boxing logo printed. One pocket on side with zipper. Adjustable shoulder strap.

Colours : Black - White/Black/Gold - Blue/White.

Sizes : S/ 38x23x16cm - M/38x26.5x20cm - L/46x32x27cm.



adiACC103

ADIACC103 - Rounded large bag

Material: PU. Zipper opening on top.

Two pockets with zipper on both sides.

Inside polyester lining nylon.

Handles and carry-on shoulder strap with five stitchings on.

Printing : «Boxing club» on side.

Dimensions: 70 cm lenght - 32 cm diameter.



adiACC104**ADIACC104 - Nylon team bag**

Material: Nylon. Zipper opening on top.
Four metal rivets at bottom.
Two pockets with zipper on both sides. Inside polyester nylon.
Printing : «Boxing club» on side.
Dimensions: 55,5x24,5x24,5 cm - 70x35x35 cm.



adiACC105**ADIACC105 - PU team bag**

Material: PU. Zipper opening on top. Four metal rivets at bottom.
Two pockets with zipper on both sides. Inside polyester nylon.
Printing : «Boxing club» on side.
Dimensions: 55,5x24,5x24,5 cm



adiACC116**ADIACC116 - Carry-on hand bag**

Material: PU. Zipper opening on top.
Four metal rivets at bottom. Inside polyester nylon.
Printing option: Boxing.
Dimensions: 44x26,5x19,5 cm.



adiACC120**ADIACC120 - Carry-on shoulder bag**

Material: PU. Zipper opening on top.
Four metal rivets at bottom. One opened pocket on side.
Five stitchings on strap. Inside polyester nylon.
Printing option: Boxing.
Dimensions: 46x32x27 cm - 38x30x12 cm.



ADITB142

Amateur Boxing tank top

Material: 100% polyester. Sleeveless cut, round neck.

Colours : Black - Blue - Red - White.

Sizes : XXS - XS - S - M - L - XL - XXL.

ADITB152

Amateur Boxing short

Material: 100% polyester 180 grs/m2. Large elasticated waist.

Colours : Black - Blue - Red - White.

Sizes : XXS - XS - S - M - L - XL - XXL.



adipower Box Tank M

PowerWEB Support and amplify natural sports movements through the use of strategically placed prints.

Rubber printed 3 stripes and performance logo: For additional comfort due to reduced seaming and a sleeker look.

Elastic silicone tape inside to fix shorts and tank in place
57% rec.Polyester/43% Polyester, single jersey, 150g

X12270 collegiate navy/lone blue

X12299 university red/collegiate red

42; 44; 46; 48; 50; 52; 54; 56;

58; 60; 62; 64; 66

POWERWEB™



Box Tank Classic M

CLIMALITE® Soft, lightweight fabric for superior moisture management.

Rubber printed 3 stripes and performance logo: For additional comfort due to reduced seaming and a sleeker look.

Elastic silicone tape inside to fix shorts and tank in place
57% rec.Polyester/43% Polyester, single jersey, 150g

X12295 university red/white

X12298 collegiate navy/white

42; 44; 46; 48; 50; 52; 54; 56;

58; 60; 62

climalite



Box Shorts M

CLIMALITE® Soft, lightweight fabric for superior moisture management.

Rubber printed 3 stripes and performance logo: For additional comfort due to reduced seaming and a sleeker look.

Elastic silicone tape inside to fix shorts and tank in place
57% rec.Polyester/43% Polyester, single jersey, 150g

X12345 collegiate navy/white

X12346 university red/white

42; 44; 46; 48; 50; 52; 54; 56;

58; 60; 62

climalite



Base Punch Top M

CLIMALITE® Material Heat and Moisture management.
 100% Polyester, interlock, 150g
 V14119 light scarlet/white
 V14120 air force blue/white
 V14118 black/white
 38; 42; 46; 50; 54; 58; 62; 64



Base Punch Shorts M

CLIMALITE® Material Heat and Moisture management.
 100% Polyester, interlock, 150g
 V14110 light scarlet/white
 V14111 air force blue/white
 V14109 black/white
 38; 42; 46; 50; 54; 58; 62; 64

climalite



Reversible Punch Top M

Reversible item 2 Products in 1
 Climalite Material Heat and Moisture Management
 100% Polyester, interlock, 150g
 V14100 air force blue/light scarlet
 42; 46; 50; 54; 58; 62

climalite



Reversible Punch Shorts M

Reversible item 2 Products in 1
 Climalite Material Heat and Moisture Management
 100% Polyester, interlock, 150g
 V14090 air force blue/light scarlet
 42; 46; 50; 54; 58; 62

climalite

climalite



adipower Box Tank W

PowerWEB Support and amplify natural sports movements through the use of strategically placed prints.

Rubber printed 3 stripes and performance logo: For additional comfort due to reduced seaming and a sleeker look.

Elastic silicone tape inside to fix shorts and tank in place
57% rec.Polyester/43% Polyester, single jersey, 150g

X12292 collegiate navy/collegiate red

X12300 university red/collegiate red

32; 34; 36; 38; 40; 42; 44; 46; 48

POWERWEB™



Box Tank Classic W

CLIMALITE® Soft, lightweight fabric for superior moisture management.

Elastic silicone tape inside to fix shorts and tank in place
Rubber printed 3 stripes and performance logo: For additional comfort due to reduced seaming and a sleeker look.

57% rec.Polyester/43% Polyester, single jersey, 150g

X12296 collegiate navy/white

X12297 university red/white

32; 34; 36; 38; 40; 42; 44; 46; 48



Box Shorts W

CLIMALITE® Soft, lightweight fabric for superior moisture management.

Rubber printed 3 stripes and performance logo: For additional comfort due to reduced seaming and a sleeker look.

Elastic silicone tape inside to fix shorts and tank in place
57% rec.Polyester/43% Polyester, single jersey, 150g

X12350 collegiate navy/white

X12351 university red/white

32; 34; 36; 38; 40; 42; 44; 46; 48



Box Shorts W

CLIMALITE® Soft, lightweight fabric for superior moisture management.

Rubber printed 3 stripes and performance logo: For additional comfort due to reduced seaming and a sleeker look.

Elastic silicone tape inside to fix shorts and tank in place

100% rec.Polyester, interlock, 180g

X12333 collegiate navy/white

X12334 university red/white

32; 34; 36; 38; 40; 42; 44; 46; 48

climalite

ACCESSORIES



Performance Box Sock

Knee length.

Arch grip.

Thermo regulation upper.

Blister preventive material.

63% Polyamide/33% Polyester/2% Elastodien/2% Elasthane, others

625326 black/white

.1; .2; .3; .4; .5; .6



B8 Box Robe

ClimaLite Soft, lightweight fabric for superior moisture management.

BREATHABLE FABRIC Improves temperature control.

3 Stripes taping.

Extra wide sleeves for boxing gloves.

Boxing specific hood silhouette.

100% Polyester, satin, 120g

312390 black

42; 46; 50; 54; 58; 62

climalite



adiSTH05

Thai short

Material: 100% polyester satine alike. Weight +/- 160 grs/m2.

Large elasticated waist.

Large printing both on front and back sides.

Colour : Black - Blue/White - White/Black - White/Gold - Red/White.

Sizes : XXS - XS - S - M - L - XL - XXL.



adiSTH06

Thai short

Material: 100% polyester satine alike. Weight +/- 160 grs/m2.

Large elasticated waist.

Large printing both on front and back sides.

Colour : Black/White - White/Blue/Red.

Sizes : XXS - XS - S - M - L - XL - XXL.



adiSTH07

Thai short

Material: 100% polyester satine alike. Weight +/- 160 grs/m2.

Large elasticated waist.

Large printing both on front and back sides.

Colour : Black/White - Blue/White - White/Black - White/Gold Red/White.

Sizes : XXS - XS - S - M - L - XL - XXL.



adiSTH08

Thai short

Material: 100% polyester satine alike. Weight +/- 160 grs/m2.

Large elasticated waist.

Large printing both on front and back sides.

Colours : Black/White - White/Black.

Sizes : XXS - XS - S - M - L - XL - XXL.



adiSTH09

Thai short

Material: 100% polyester satine alike. Weight +/- 160 grs/m2.
Large elasticated waist.

Large printing both on front and back sides

Colour : Black/White - Blue/White - White/Black - White/Gold
Red/White.

Sizes : XXS - XS - S - M - L - XL - XXL.



adiSKB02

Kick boxing short

Material: 100% polyester satine alike. Weight +/- 160 grs/m2.
Large elasticated waist.

Large printing both on front and back sides

Colour : Black - Blue - Red - White/Black - White/Gold

Sizes : XXS - XS - S - M - L - XL - XXL.



adiSMB01

Boxing shorts

100% polyester satine alike heavy fabric.

Large elasticated waist with lace-up

Colour : Black/Gold.

Sizes : XXS, XS, S, M, L, XL, XXL.

adiSMB02

Boxing shorts

100% polyester satine alike heavy fabric.

Large elasticated waist with lace-up.

Colour : Black/White - White/Black - Red/
White - Blue/White.

Sizes : XXS, XS, S, M, L, XL, XXL.

adiSMB03

Boxing shorts

100% polyester satine alike heavy fabric.

Large elasticated waist with lace-up

Colour : Black/Silver.

Sizes : XXS, XS, S, M, L, XL, XXL.



adiTU06

Kick boxing suit
Material: 100% polyester satine alike.
Heavy fabric. ClimaCOOL® technology provides ventilation and regulate perspiration thanks to highly efficient materials. Direct printing. Jacket with «V» neck opening. Pants with elasticated waist plus loops for belt.
Colour : Black - White - Red - Blue

CLIMA COOL®



adiTU07

Kick boxing suit
Material: 100% polyester satine alike.
ClimaCOOL® technology provides ventilation and regulate perspiration thanks to highly efficient materials. Direct printing. Jacket with «V» neck opening. Pants with elasticated waist plus loops for belt.
Colour : Black - White - Red - Blue

CLIMA COOL®



adiTU08

Kick boxing suit
Material: 100% polyester satine alike.
ClimaCOOL® technology provides ventilation and regulate perspiration thanks to highly efficient materials. Direct printing. Jacket with «V» neck opening. Pants with elasticated waist plus loops for belt.
Colour : Black

CLIMA COOL®



adiPFC02

Kick pants
Material: 100% polyester satine alike. Heavy fabric. Large elasticated waist.
Large printing
Colours : Black - White - Red - Blue
Sizes : XXS - XS - S - M - L - XL - XXL.



adiPFC03

Kick pants
Material: 100% polyester satine alike. Heavy fabric. Large elasticated waist.
Large printing
Colours : Black - White - Red - Blue
Sizes : XXS - XS - S - M - L - XL - XXL.



adiPFC04

Kick pants
Material: 100% polyester satine alike. Heavy fabric. Large elasticated waist.
Large printing
Colours : Black
Sizes : XXS - XS - S - M - L - XL - XXL.



adiPFC01

Kick Boxing Pants

100% polyester satine alike fabric. Pants with elasticated waist band. Without belt.
Colour : Black/White.
Sizes : 140 to 200cm.



adiPFC01B

Contact Pants Climacool

Polyester satine alike fabric. ClimaCOOL Technology. Elasticated waist with lace-up.
Colours : Black.
Sizes : 150 to 200cm.



adiTU04

Kick Boxing Pants

140 grs/m2 polyester fabric. Pants with elasticated waist band.
Colours : Black/White/Red - Black/White/Blue.
Sizes : 140 to 200cm

CLIMACOOOL®



adiTU05

Team Uniform Satin

Polyester satine alike fabric. V-neck collar. Pants with elasticated waist band. Without belt.
Colours : Black/White/Red - Black/White/Blue.
Sizes : 100 to 190cm.



adiTU01

Team Uniform Satin ClimaCOOL

Polyester fabric. V-neck collar. ClimaCOOL mesh down shoulders, arms, sides of jacket & pant with white piping. Pants with elasticated waist band. Without belt.
Colours : Red/Red mesh - Blue/Blue mesh - Black/Black mesh - White/White mesh.
Sizes : 100 to 190 cm.



adiTU02

Team Uniform

Mixed material 220 gr/m2 cotton-polyester 55:45 fabric. Red V-neck collar, red stripes on arms and legs. Pants with elasticated waist band. Without belt.
Colour : Black/Red.
Sizes : 100 to 190 cm.

CLIMACOOOL®



adiTU03

Red Fighter Suit

180 grs/m² interlock dyed fabric in reactive colors. V-neck collar. Pants with elasticated waist band. Without belt.
 Colour : Black/White trim.
 Sizes : S, M, L, XL, XXL.



adiSS01

Material 100% nylon fabric. Long sleeves. Wide 'baggy' cutting. Shiny fabric. Elasticated wrists and ankles. «adidas boxing club» crown optic on front of jacket and pants.
 Colours : Black/gold.
 Sizes : Large - XXL.





ADITB042

Cotton t-shirt S/S

Material: 100% cotton. Weight: 180 grs/m2.
Knitted fabric with round neck. Slim fit cut. Short sleeves.
Printing on front.
Colour : White
Sizes : XS to 2XL

ADITB049

Cotton t-shirt S/S

Material: 50% cotton - 50% polyester. Weight: 220 grs/m2.
Knitted fabric with round neck. Slim fit cut. Short sleeves.
Printing on front. Ref.ADITB049K with KICK BOXING printing on.
Colours : Black - Grey - Blue
Sizes : XS to 2XL



ADITB123

Closefit t-shirt sleeveless

Materials: 92% polyester - 8% spandex. Weight: 180-190 grs/m2.
Quick dry fabric with round neck. Close fit cut. Sleeveless.
Colours : Black - White
Sizes : XS to 2XL

ADITB371

Closefit t-shirt S/S

Materials: 92% polyester - 8% spandex. Weight: 220 grs/m2.
Quick dry fabric with round neck. Mesh area at back thanks to Climacool technology. Close fit cut. Short sleeves.
Ref.ADITB371K with KICK BOXING printing on.
Colours : Black - White
Sizes : XS to 2XL

CLIMACOOL®



ADITB055

Polyester t-shirt S/S

Materials: 90% polyester _ 10% spandex. Weight: 220 grs/m2.
 Round neck. Slim fit cut.
 Short sleeves. Printing on front.
 Colour : Grey
 Sizes : XS to 2XL



ADITB048

Polyester t-shirt S/S

Materials: 100% cotton. Weight: 180 grs/m2.
 Round neck. Slim fit cut. Short sleeves.
 Printing on front.
 Colours : Black - Red
 Sizes : XS to 2XL



ADITB071

Polo «country» S/S

Material: 100% cotton pique material, rugged dry hand feel. Double layer interior neck taping and reinforced side gussets. Weight: 220 grs/m2. Slim fit polo traditional cut. Possible SMU Country flags.
 Colour : White
 Sizes : XS to 2XL



ADITB091

Hoody sweater L/S

Materials : polyester 20% - cotton 80%. Weight 345 grs/m2. Super soft waffle, lined drawstring hood, front side pockets, muscle fit.
 Colours : Black/white - Grey-white - Grey/red.
 Sizes : XS to 2XL



ADITB093

Full zipped sweater

Materials : polyester 20% - cotton 80%. Weight 345 grs/m2.
 Super soft waffle, full zipped on front, side pockets, muscle fit.
 Colours : Black - White - Grey
 Sizes : XS to 2XL



ADITB081

Hoody sweater sleeveless

Materials : polyester 20% - cotton 80%. Weight 345 grs/m2.
 Super soft waffle, lined drawstring hood, front side pockets, muscle fit.
 Colours : Black - Grey
 Sizes : XS to 2XL



ADITB161

Training Pants

Materials : polyester 40% - cotton 60%. Weight 345 grs/m2.
 Elasticated waist plus drawstring, side pockets, comfort fit.
 Colours : Black - Grey - Blue
 Sizes : XS to 2XL



ADITB262

Training Short

Materials : polyester 40% - cotton 60%. Weight +/- 250 grs/m2.
 Elasticated waist plus drawstring, side pockets, comfort fit.
 Colours : Black - Grey - Blue
 Sizes : XS to 2XL



ADITB24

Men teddy jacket

Mixed wool and polyester 400 grs/m2 material for main body part. Strong PU material at sleeves. Unisex, wide and comfortable cut. Round neck. Elasticated wrists and waist. Pockets on sides. Closing system by buttons.

Colours : Black/White.

Sizes : XS to XXXL.

MMA LINE



ADICSS46

Training short
Materials: 60% cotton - 40% polyester ripstop. Traditional cut with strong nylon lace-up tightening. Anti slippery material inside waist. Stretchable polyester material in between legs. Reinforcement parts between materials.
Colours : White - Red - Blue.
Sizes : XS to 2XL



ADICST05

Rashguard
Material: 95% polyester - 5% spandex.
vWeight : 230 grs/m2. Closefit cut. Flat lock seams. Round neck. Short sleeves or long sleeves version.
Colours : White - Red - Blue.
Sizes : XS to 2XL



ADICSS43

Training short
Materials: 60% cotton - 40% polyester ripstop. Traditional cut with strong nylon lace-up tightening. Anti slippery material inside waist. Stretchable polyester material in between legs. Reinforcement parts between materials.
Colours : Colours : Black/Blue - Black/Red.
Sizes : XS to 2XL



ADICSS53

Training short

Materials: 60% cotton - 40% polyester ripstop. Traditional cut with strong nylon lace-up tightening. Anti slippery material inside waist. Stretchable polyester material in between legs. Reinforcement parts between materials.

Colours : Black/White - White/Black.

Sizes : XS to 2XL



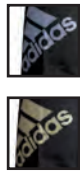
ADICST11

Rashguard

Material: 95% polyester - 5% spandex. Weight : 230 grs/m2. Close-fit cut. Flat lock seams. Round neck. Short sleeves or long sleeves version.

Colours : Black/White - White/Black.

Sizes : XS to 2XL



ADICST03

Rashguard

Material: 95% polyester - 5% spandex. Weight : 230 grs/m2. Closefit cut. Flat lock seams. Round neck. Short sleeves or long sleeves version.

Colours : Black/Blue - Black/Red.

Sizes : XS to 2XL

ADICSS52

Training short

Materials: 60% cotton - 40% polyester ripstop. Traditional cut with strong nylon lace-up tightening. Anti slippery material inside waist. Stretchable polyester material in between legs. Reinforcement parts between materials.

Colours : Black/Gold - Black/Silver.

Sizes : XS to 2XL

ADICST07

Rashguard

Material: 95% polyester - 5% spandex. Weight : 230 grs/m2. Closefit cut. Flat lock seams. Round neck. Short sleeves or long sleeves version.

Colours : Black/Gold - Black/Silver.

Sizes : XS to 2XL



henle is all in



SHOES



ADISFB01

French Boxing Style Shoes - Kids

Leather made shoes. Mid-height.
Regular sole without printing and structure (Federation rules).
Lace-up closing system plus velcro tape for covering laces.
Colours : Black.
Sizes : 32 to 37 (EUR)
(French stock only)



ADISFB02

French Boxing Style Shoes - Adults

Strong leather made shoes. Mid-height.
Regular sole without printing and structure (Federation rules).
Lace-up closing system.
Colours : Black.
Sizes : 38 to 47 (EUR)
(French stock only)

Boxing FTW SS12



ADIPOWER BOXING

You can see how these shoes give you more power. A sturdy support spine runs from heel to ankle, 3D moulded foam structure for whole-foot support, and cushioning in the midsole.
 Ridgeback Innovative, co-molded foam upper process combines ultimate support with aesthetics
 Open Mesh Sturdy, single layer, highly breathable mesh for superior climate control
 Full-length Outsole Boxing-engineered, adiWEAR outsole with heel, sidewall, and forefoot wraps for durability
 Textile / Synthetic
 V24371 core energy/black/white]
 3.5-15.0



PROBOUT

Full-leather, mid-cut boot from the ProBout Professional Boxing Collection provides excellent fit, support, and speed in the ring. Leather Quarter Full-grain leather with internal ankle support elements provide comfortable, glove-like fit
 Leather Vamp Full-grain leather forefoot vamp provides comfortable, glove-like fit
 Torsion System Torsion element for enhanced midfoot support
 Two-Piece Outsole Two-piece, adiWEAR outsole for weight-savings, high abrasion resistance, and grip
 Leather
 132878 black/white/metallic silver
 3.5-15.0

ADIWEAR™

TORSION® SYSTEM ADIWEAR™



BOX-CHAMP SPEED II

It wasn't just their ability in the ring that made them legends. It was their style. Sporting a design from the '70s, this boxing shoe pairs modern technology with a classic look.
 Open Mesh Sturdy, single layer, highly breathable mesh for superior climate control
 Molded Wedge Molded midsole wedge for sport-specific cushion requirements
 Torsion System Torsion element for enhanced midfoot support
 Two-Piece Outsole Two-piece, adiWEAR outsole for weight-savings, high abrasion resistance, and grip
 Textile / Synthetic
 909301 black/light scarlet/metallic gold
 3.5-13.0; 14.0; 15.0



TYGUN II

High-top boot with supportive overlays feels quick and agile thanks to its minimalist outsole and midsole. Ideal for practitioners of the sweet science of any ability level.
 Synthetic 3 Stripes 3 Stripes of synthetic material for lightweight support
 Open Mesh Open mesh upper for optimal upper foot climate
 Synthetic Overlays Synthetic leather overlays offer lightweight support, durability, and moisture management
 Textile / Synthetic
 G12445 true blue/gum/white
 3.5-15.0



BOX HOG

Low-profile boot with minimalist mesh upper construction keeps you cool into the last round.
 Textile 3 Stripes 3 Stripes of woven textile for superior lightweight support
 3D Mesh 3D, open weave, warp-knit mesh for high breathability
 Suede Overlays Synthetic-suede overlays for light weight, durability and comfort
 Gum Rubber Gum rubber outsole offers ultimate indoor traction and grip
 Textile / Synthetic
 116373 black/black/running white
 3.5-15.0

TORSION® SYSTEM ADIWEAR™



ADIPOWER BOXING

You can see how these shoes give you more power. A sturdy support spine runs from heel to ankle, 3D moulded foam structure for whole-foot support, and cushioning in the midsole. Ridgeback Innovative, co-molded foam upper process combines ultimate support with aesthetics
 Molded Tongue Innovative, 3D, pre-shaped tongue provides unmatched instep comfort and support
 Full-length Outsole Boxing-engineered, adiWEAR outsole with heel, sidewall, and forefoot wraps for durability
 Textile / Synthetic
 V24371 core energy/black/white
 G62678 black/core energy/core energy]
 3.5-15.0



PROBOUT

Full-leather, mid-cut boot from the ProBout Professional Boxing Collection provides excellent fit, support, and speed in the ring.
 Leather Quarter Full-grain leather with internal ankle support elements provide comfortable, glove-like fit
 Leather Vamp Full-grain leather forefoot vamp provides comfortable, glove-like fit
 Molded Wedge Molded midsole wedge for sport-specific cushion requirements
 Torsion System Torsion element for enhanced midfoot support
 Two-Piece Outsole Two-piece, adiWEAR outsole for weight-savings, high abrasion resistance, and grip
 Leather
 132878 black/metallic silver/white]
 3.5-15.0

ADIWEAR™

TORSION® SYSTEM ADIWEAR™



BOX RIVAL II

Light as a feather, tough as leather. Proven model with Synthetic suede materials and mesh for lightweight breathable support. Good for daily training and competition boxing alike.
 3D Mesh 3D, open weave, warp-knit mesh for high breathability
 Suede Overlays Synthetic-suede overlays for light weight, durability and comfort
 Torsion System Torsion element for enhanced midfoot support
 Two-Piece Outsole Two-piece, adiWEAR outsole for weight-savings, high abrasion resistance, and grip
 Textile / Synthetic
 G62604 black/light onix/running white]
 3.5-13.0

TORSION® SYSTEM



TYGUN II

High-top boot with supportive overlays feels quick and agile thanks to its minimalist outsole and midsole. Ideal for practitioners of the sweet science of any ability level.
 Synthetic 3 Stripes 3 Stripes of synthetic material for lightweight support
 Open Mesh Open mesh upper for optimal upper foot climate
 Synthetic Overlays Synthetic leather overlays offer lightweight support, durability, and moisture management
 Textile / Synthetic
 538352 black/running white
 3.5-15.0



BOX HOG

Low-profile boot with minimalist mesh upper construction keeps you cool into the last round.
 Die-cut EVA midsole for lightweight comfort
 Inlay EVA insole for comfort
 Non-marking rubber outsole
 Upper: Open mesh nylon for best breathability and quick drying.
 Textile / Synthetic
 116373 black/black/running white
 3.5-15.0





CHAMPION (J930 IJF-M1)

High level. IJF approved.

CONFORM TO NEW IJF 2011 RULES

Stitching guaranteed 10 years thanks to unique thread design.

Grain cloth. Cotton 80 %, polyester 20 %.

Dense, sanforized weave. Numerous reinforced areas.

Official uniform of many national teams: France, Germany, Austria, Hungary, Cuba, Korea, Iran, Egypt, etc.

Sizes: 150 to 210 cm (5 x 5 cm).

adiB240D-IJF

adiB240D-IJF

CONFORM TO

NEW IJF 2011 RULES

100% cotton.

Colour: black.

Sizes: 240 to 340 cm.





all ippon

MADE IN JAPAN





MADE IN JAPAN (J950)

Competitors.

Unique stitching design made in Japan in the pure tradition and manufactured in an historical and genuine Japanese factory. Cut as per latest IJF international guidance. Soft and comfortable grain-cloth cotton fabric. Suitable for coaches and all judo lovers. Golden embroidered adidas logo on left arm : pure and simple decoration. Numerous reinforced areas. Composition 100 % cotton.
Colours: white.
Sizes : 150 to 205 cm (5 x 5 cm).

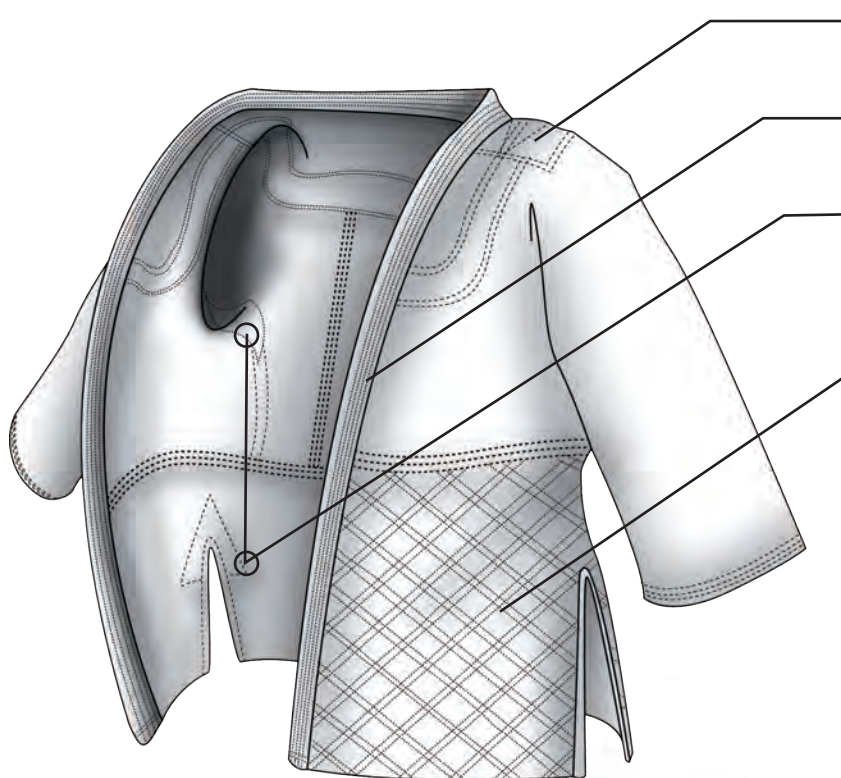


MADE IN JAPAN (J750)

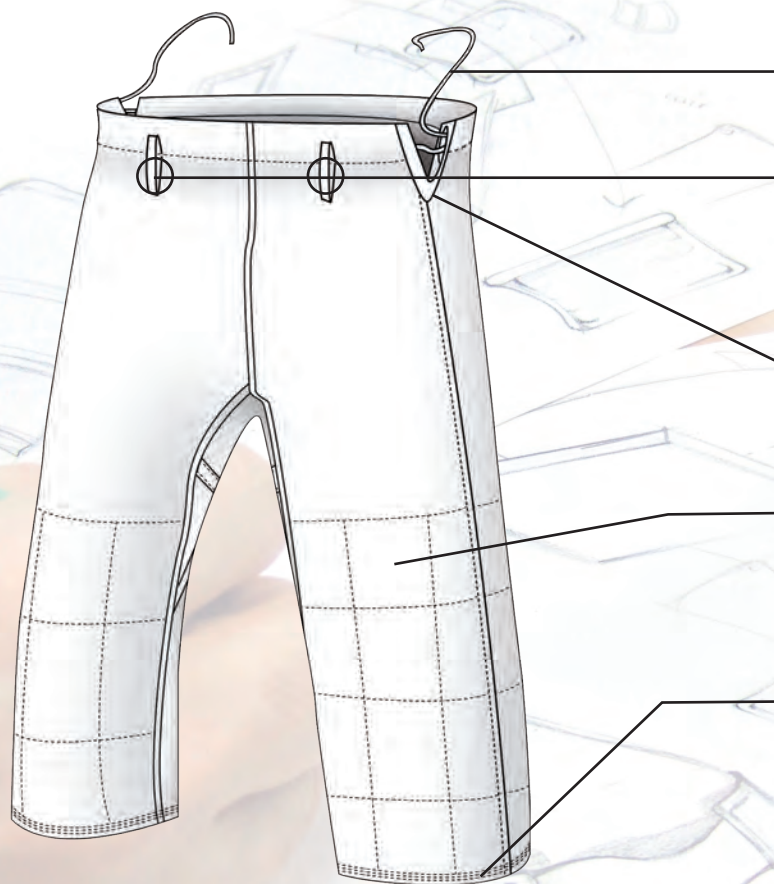
Competitors and instructors.

Unique stitching design made in Japan in the pure tradition and manufactured in an historical and genuine Japanese factory. Soft and comfortable grain-cloth cotton fabric. Suitable for coaches and all judo lovers. Red embroidered adidas logo on left arm : pure and simple decoration. Numerous reinforced areas. Composition 100 % cotton.
Colours: white.
Sizes : 150 to 205 cm (5 x 5 cm).





- Strongly resistant Sashiko fabric *
- Controlled hardness of collar *
- Reinforcement parts *
- Official and optimized length of low part of jacket *



- Drawstring for tightening
- Waist loops
- Reinforcement side slits
- Reinforced knee pad with double-layer of fabric *
- Overlock stitching to prevent fray *

* as per IJF rules



CHAMPION J930IJF-M1

High level. IJF approved.
 CONFORM TO NEW IJF 2011 RULES
 Stitching guaranteed 10 years thanks to unique thread design.
 Grain cloth. Cotton 80 %, polyester 20 %.
 Dense, sanforized weave. Numerous reinforced areas.
 Official uniform of many national teams: France, Germany, Austria, Hungary, Cuba, Korea, Iran, Egypt, etc.
 Sizes: 150 to 210 cm (5 x 5 cm).

P o l y c o t t o n



Stretch tests have demonstrated that polycotton is 20% stronger, against the same force and with the same density of weave per m², and shrinks less after the first washing (30°C) by 15% (compared to %100 cotton).



J930S (Slim FIT)

High level.

Stitching guaranteed 10 years thanks to unique thread design. Grain cloth. Cotton 80 %, polyester 20 %. Dense, sanforized weave. Numerous reinforced areas. Available both in old cut version and in blue colour. Cutting adapted for ladies, teens and slim bodies. Sizes: 150 to 210 cm (5 x 5 cm).



JT275 - JT275 Blue

100% cotton trousers (J930 model), weave cotton material. White or blue. Sizes: 150 to 200 cm (5 x 5 cm)



ELITE (J800IJF-M1)

Competitors and instructors. IJF approved.

CONFORM TO NEW IJF 2011 RULES

Unique stitching design guaranteed 10 years. Brown and black belts. Black embroidered stripes. Numerous reinforced areas. Composition 80 % cotton, 20 % polyester. Colours: white or blue. Size 150 to 210 cm (5 x 5 cm).

CONTEST (J650)

Training/competition.

Grain cloth. 80 % cotton, 20 % polyester. Seam on back. Unique stitching design guaranteed 10 years. Black embroidered stripes. Colours: white or blue. Size: 150 to 200 cm (10 x 10 cm)





TRAINING

Training.
 Grain cloth, 80 % cotton, 20 % polyester.
 Unique stitching design guaranteed 10 years.
 Seam on back. Blue woven stripes.
 Colour: white or blue.
 Size: 150 to 200 cm (10 x 10 cm).



CLUB

Initiation
 Numerous reinforced areas.
 Grain cloth. 80 % cotton, 20 % polyester.
 Elastic waistband.
 Blue stripes.
 Sizes: 110 to 200 cm (10 x 10 cm).



EVOLUTION

Children
 Patented "2 sizes in 1" system: a removable hem allow you to adapt the length of jacket and pants.
 The uniform grows with your child! 100 % supple and comfortable cotton fabric. Elastic waistband.
 Woven light blue stripes.
 Sizes: 90/100 cm, 100/110 cm, 110/120 cm, 120/130cm, 130/140cm, 140/150cm, 160/170cm,



RIO CUT JJ350

High level.
 Material ripstop polyester:cotton. Dense and resistant fabric on all jacket parts. Brazilian traditional cut. Side slits with strong reinforcements for intensive use. Reinforcement drill material on knees.
 Colour: white or blue or black.
 Sizes: 150 to 210 cm (10 x 10 cm).



RIO CUT JJ500

Training.
 Material full grain-cloth cotton 80 % : polyester 20 %. Dense "grain cloth" weave on all jacket parts. Brazilian traditional cut. Side slits with strong reinforcements for training use. Reinforcement drill material on knees.
 Colour: white or blue or black.
 Sizes: 150 to 210 cm (10 x 10 cm).





BELTS

1. adiB240

Cotton 9 rows of stitching. Brown, black, red, blue. 240 to 340 cm.

2. adiB260

Cotton, rows of stitching. Black, gold embroidery. 240 to 340 cm.

3. adi B420 (6 DAN)

White/red. 240 to 340 cm

4. adiB240JF

CONFORM TO NEW IJF 2011 RULES
100% cotton.
Colour: black.
Sizes: 240 to 340 cm.

5. adiB220 Cotton 8

rows of stitching. Colours: white, yellow, orange, green, red, blue. 200x340cm



adiBP07

Shin pad

Cotton. Absorbent foam. Lightweight protection. Colours : White, blue or red. Sizes: XXS to XL.

CE



adiSH1

Indoor Shoes

100% polyester material. Comfortable and light mesh material. Elastic at heel for tightening. Ideal for walking between locker-room and dojo. Colours : black/white - black/dark grey. Sizes : 3XS to XL.



adiWS1

100% polyester & rubber outside sole. Nylon stitchings. Anti-slip sole - strong polyester outside cover. Three stripes and Chinese «WUSHU» print in between stripes. Colours : white/black - black/gold. Sizes : 35 to 45 (full sizes).

JUDO SPORTS BAGS



adiACC050

Nylon judo bag

"2 in 1" bag, convertible into backpack thanks to two shoulder straps stowed inside the bag. Large opening. Printing JUDO.

Sizes: M (60 x 30 x 30 cm) - L (70 x 35 x 35 cm).



adiACC051J

PU judo bag

"2 in 1" bag, convertible into backpack thanks to two shoulder straps stowed inside the bag. Large opening. «Budo Spirit» range.

Printing options: Judo or Budo.

Sizes : S (50 x 25 x 25 cm) - M (60 x 30 x 30 cm) - L (70 x 35 x 35 cm).



adiACC030

Judo «grain-cloth» sports bag

Sports bag with two handles. Cotton «grain cloth» material. Zip closing system on top of bag.

Dimensions (approximately) : 50x25x25cm.

Colors : white/black - blue/white.



75

adiACC040

Judo backbag

Sports bag convertible into backbag with two handles and long shoulder strap. «Grain cloth» cotton material. Zip closing on top of bag.

«JUDO» printing on bag's side.

Dimensions (approximately) : 58 x 27 x 27 cm.

Colors : white/black - blue/white.



adiACC110-BU

PU Shiny Budo Bag

Shiny polyester bag, zipper, shoulder handle.
BUDO kanji printed on one side.

Colours : Black-White/Bk/Gold-Blue/White.

Sizes : S/ 38*23*16cm-M/38*26.5*20cm-L/46*32*27cm.



adiACC110-CS

PU Shiny Combat Sport Bag

Shiny polyester bag, zipper, shoulder handle.
COMBAT SPORT printed on one side.

Colours : Black-White/Bk/Gold-Blue/White.

Sizes : S/ 38*23*16cm-M/38*26.5*20cm-L/46*32*27cm



adiACC094

ADIACC094 - Judo backbag

Materials: polyester + judo grain cloth cotton.

Two padded straps and pocket on front.

«JUDO» printed on one shoulder strap.

Dimensions: 28 x 43 x 28 cm.



adiACC103

ADIACC103 - Rounded team bag

Material: Nylon. Zipper opening on top. Four metal rivets at bottom.

Two pockets with zipper on both sides.

Inside polyester nylon.

Handles and carry-on shoulder strap with five stitchings on.

Printing option: Judo, Budo.

Dimensions: 70 cm length - 32 cm diameter.



adiACC104

ADIACC104 - Nylon team bag

Material: Nylon. Zipper opening on top.

Four metal rivets at bottom.

Two pockets with zipper on both sides. Inside polyester nylon.

Printing option: Judo, Budo.

Dimensions: 55,5x24,5x24,5 cm - 70x35x35 cm.



adiACC105

ADIACC105 - PU team bag

Material: PU. Zipper opening on top. Four metal rivets at bottom.

Two pockets with zipper on both sides. Inside polyester nylon.

Printing option: Judo, Budo.

Dimensions: 55,5x24,5x24,5 cm



adiACC116

ADIACC116 - Carry-on hand bag

Material: PU. Zipper opening on top.

Four metal rivets at bottom. Inside polyester nylon.

Printing option: Judo, Budo.

Dimensions: 44x26,5x19,5 cm.



adiACC120

ADIACC120 - Carry-on shoulder bag

Material: PU. Zipper opening on top.

Four metal rivets at bottom. One opened pocket on side.

Five stitchings on strap. Inside polyester nylon.

Printing option: Judo, Budo.

Dimensions: 46x32x27 cm - 38x30x12 cm.



karate





BELTS

1. adiB240D - Elite

Cotton 9 rows of stitching. Brown, black, red, blue.
 Sizes : 240 to 340 cm.

2. adiB260D - Champion

Cotton, rows of stitching. Black, gold embroidery.
 Sizes : 240 to 340 cm.

3. adiB240 WKF

Official WKF belt.
 Cotton 9 rows of stitching.
 Red, blue or black.
 Sizes: 260 to 340 cm.

4. adiB220-Clubv

Cotton 8 rows of stitching. White, yellow, orange, green, red, blue.
 Sizes : 200x340cm



KUMITE

Kumite gi - experienced competitors

Official WKF decoration. The reference for national teams. Lightweight, supple, comfortable fabric, 40 % cotton, 60 % polyester. Ventilation areas in the back and buttocks. ClimaCOOL® technology provides ventilation and regulates temperature and perspiration thanks to highly efficient materials that optimise performance. Trousers with full-length gusset and elastic waist. Towel material inside waist for better comfort. Minimal shrinkage, quick drying fabric. Option : 3 woven white stripes on shoulders. New design and elegant stitchings at back of jacket.
 Sizes: 150 to 210 cm. (5 x 5 cm)

COMBAT

Kumite gi-training/competition

Official WKF decoration. Mixed ribbed fabric. 60 % cotton, 40 % polyester. The fabric breathes, providing optimal lightness and freedom of movement. Ventilation areas in the back and buttocks. ClimaCOOL® technology provides ventilation and regulates temperature and perspiration thanks to highly efficient materials that optimise performance. Trousers with full-length gusset and elastic waist. Minimal shrinkage. Option : 3 woven white stripes on shoulders. New design and elegant stitchings at back of jacket.
 Sizes: 150 to 210 cm. (5 x 5 cm)





CHAMPION

Kata-competition

Official WKF decoration.
Heavy, crisp karate gi. Excellent finishing touches.
Trousers with full-length gusset. Ample, traditional Japanese cut (short trousers and sleeves) or European cut (longer length). The preferred kimono of national teams and many world champions.
Strong 100% cotton fabric.
Sizes: 150 to 210 cm (5 x 5 cm).



ELITE

Kata - training

Official WKF decoration.
Pale blue fabric.
Same fabric and features as CHAMPION model.
Ample, traditional European cut (sleeves and trousers longer than Japanese cut) or Japanese traditional cut (short trousers and sleeves).
Strong 100% cotton fabric.
Sizes: 150 to 210 cm (5 x 5 cm).



CLUB

Kumite gi-training/competition

Official WKF decoration. Fabric 80% cotton, 20% polyester. Ideal for both beginners and confirmed competitors. Ventilation areas in the back, underarms, buttocks and crotch. ClimaCOOL® technology provides ventilation and regulates temperature and perspiration thanks to highly efficient materials that optimise performance. Trousers with full-length gusset and elastic waist. Sizes: 110 to 200 cm (10 x 10 cm).

TRAINING

Kumite gi-training/competition

Fabric 80% cotton, 20% polyester. Ideal for both beginners and confirmed practitioners for training.
Sizes: 110 to 200 cm (10 x 10 cm).

KIDS

Patented system «2 sizes in 1» system:

A removable hem allow you to adapt the length of jacket and pants. The uniform grows with your child! 100% supple and comfortable fabric. Elastic waistband.
Sizes: 90/100 cm, 100/110 m, 110/120 cm, 120/130 cm, 130/140 cm, 140/150 cm, 160/170 cm.





661.22

WKF karate mitt

New WKF approved mould and model and official mitt of the World Karate Federation available in blue or red. New outer fabric. New ergonomic shape for optimal safety and comfort, in compliance with new international rules to secure and optimize practice. Elastic closing. Colours: red or blue. Also exists in white* (*non WKF approved). Sizes: XS, S, M, L, XL.

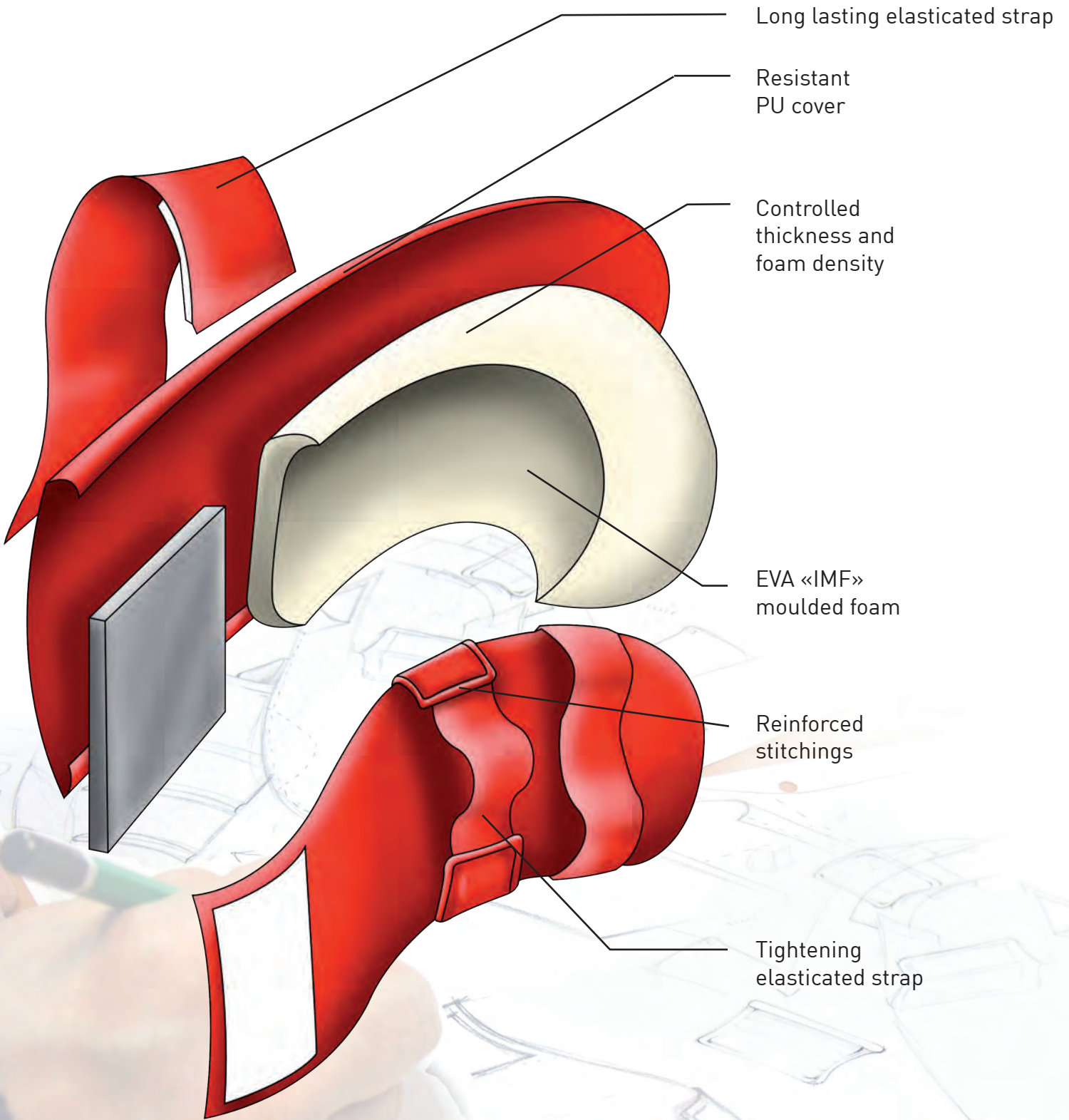


661.23

WKF karate mitt with thumb

New WKF approved mould and model and official mitt of the World Karate Federation available in blue or red. New outer fabric. New ergonomic shape for optimal safety and comfort, in compliance with new international rules to secure and optimize practice. Elastic closing. Model with thumb. Also exists in white* (*non WKF approved). Sizes: XS, S, M, L, XL.





661-22 WKF MODEL





661.35

Official WKF shin-n-step pad

New WKF approved mould and model and official mitt of the World Karate Federation available in blue or red. New outer fabric. New ergonomic shape for optimal safety and comfort, in compliance with new international rules to secure and optimize practice. Elastic & scratch closing. Removable foot pad. Leather reinforced friction area at the inside part of foot, back foot protection, bends with joint while protecting foot/shin. Colours: red or blue. Sizes: XS, S, M, L, XL.



661.50

WKF foot pad

WKF approved. Same features as ref. 661.35. Dual adjustable Velcro straps can be linked to shinpad, ref / 661.35. High-density foam and PU fabric. New ergonomic shape for optimal safety and comfort. Colours: red or blue. Sizes: XS, S, M, L, XL.



661.11

Training karate mitts

Model without thumb. PU outer Fabric and EVA foam padding. Thinner shape (non WKF). Elastic closing. Three stripes on wrist strap. Colours : red, blue or white. Sizes : XS, S, M, L, XL.

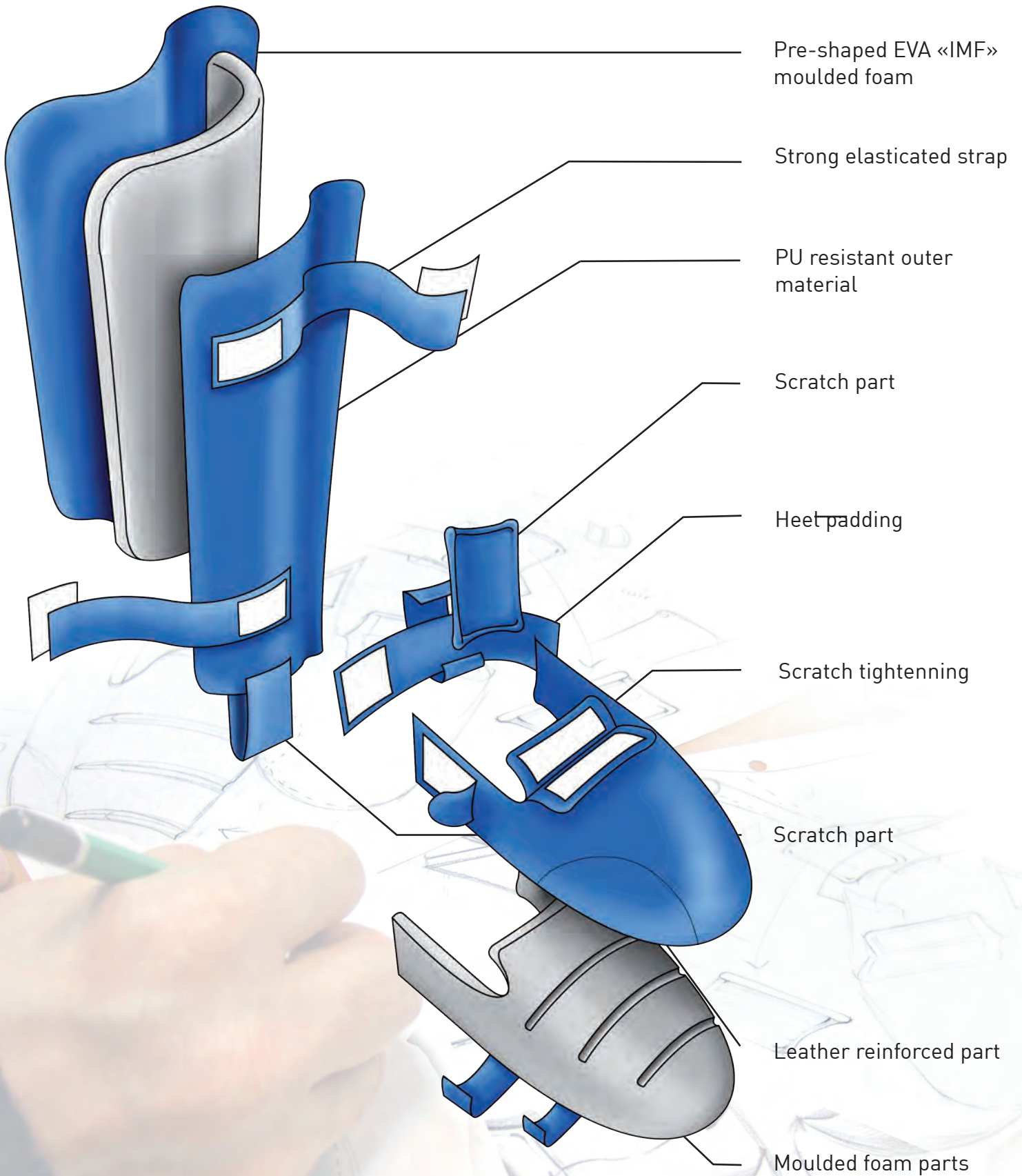


661.12

Training karate mitts w/thumb

Training karate mitts w/thumb. (non WKF). Colours : red, blue or white. Sizes : XS, S, M, L, XL.





661-35 WKF MODEL





adiBP05

Anatomical groin guard
 EVA foam & PU cover.
 Elastic + Velcro closing.
 Optimal protection.
 Colour: white.
 Sizes: S to XL.



adiBP06

Cup supporter
 Light, airy, cotton and synthetic fabric.
 ClimaCOOL® technology provides ventilation
 and regulates temperature and perspiration
 thanks to highly efficient materials that
 optimise performance.
 Colour: white. Sizes: S to XL.



CLIMACOOL®



69C03

Official WKF female groin guard
 EVA foam & PU cover.
 Elastic+Velcro closing. Optimal protection.
 Colour: white.
 Sizes: XS, S, M, L, XL.



661.14

Official WKF women's chest guard
 ClimaCOOL® chest guard. WKF approved.
 PE rigid shell, flexible near armpits. Safety
 and freedom of movement. Supplied with
 adjustable bra. Colour: white.
 Sizes: S, M, L, XL.



adiBP09

Single mouth guard
 Thermoformable. Box included.
 Sizes : Junior or Senior.



adiBP10

Double mouth guard
 Thermoformable. Box included.
 Size: senior





661.25

Shin pad

EVA foam & PU cover. Triple Velcro closing.
Ergonomic shape.
Colours: black, red, blue or white.
Sizes: S to XL.

PU3G
INNOVATION



adiBP07

Shin pad

Cotton. Absorbent foam.
Lightweight protection.
Colours: white, red or blue.
Sizes: XS to XL.



adiBP08

Climacool shin-n-step pad

Cotton. Absorbent foam, mesh cover. Lightweight protection.
Colours: white, red or blue.
Sizes: XS to XL.



adiGJJ01

Jiu-Jitsu Mitts

EVA foam & PU cover. Elastic + velcro tightening system. Anti-skid lining based on I-COMFORT+ technology with moisture wicking material.
Colours: red, blue or black.
Sizes: S to XL.



PU3G
INNOVATION



Outer material: resistant and slightly elasticated polyester material. Ergonomic shape thanks to close-fit cut. Flat-lock stitchings for comfort when worn. Closefit cut and ergonomic shape of the protective garment fitting perfectly to the body.

Inside material: separated blocks of new generation of «EVA» foam with a high level of shock absorption. Laboratory tests* have shown that this protective item has a shock absorption capacity which reduces of 76% -in average- the impact force (test reference: 3 joules) on the protected zones being tested.

*Test was made in comparison with free of protection zones by « Critt Sport Loisirs -Research, Innovation and Technology Center Laboratory » - France.



adiBP22

Padded t-shirt

Colour: black.

Sizes: S, M, L, XL.



adiBP23

Padded short

Colour: black.

Sizes: S, M, L, XL.



adiBP20

Shin pad

Elastics at back of shin for better tightening.

Colour: black.

Sizes: S, M, L, XL.



adiBP21

Shin pad and instep

Elastics at back of shin for better tightening.

Colour: black.

Sizes: S, M, L, XL.

ACCESSORIES



adiBAC31

Econo Thai Pad

100% PU with woven backing. Nylon vecro strap fastening.
Polymax foam padding.
Dimensions : 42 x 21 x 10 cm.



adiBAC06

Curved Kick-Shield

Exterior 100% PU 3G INNOVATION with special backing. Nylon strap holds. Filled with aero foam padding with side vents to provide vaccum effect. Zip closing.
Dimensions : 65x45x14cm.

PURE
INNOVATION



PUNCH BAGS

1. Leather punching bag (ADIBAC14)

Black leather, 2 mm thick. Suspended by four chains and swivel. Zipper opening on top of bag.

Filled with cloth scraps.

Bag dimensions: 90 x 35 ; 120 x 35 ; 150 x 35 cm

Bag weight: 37 kg ±5%

2. Woven nylon punching bag (ADIBAC13)

Black woven nylon. Suspended by four chains and galvanised swivel. Zipper opening on top of bag.

Filled with cloth scraps.

Bag dimensions: 90 x 35 ; 120 x 35 ; 150 x 35 ; 180 x 35 cm.

Bag weight: 40 kg ±5%

3. Woven nylon punching bag (ADIBAC12)

Black woven nylon. Suspended by four chains and galvanised swivel. Zipper opening on top of bag.

Filled with cloth scraps.

Bag dimensions: 90 x 35 cm

Bag weight: 28 kg ±5%

4. Lightweight "parachute fabric" punching bag (ADIBAC11)

Black polyester/cotton parachute fabric. Suspended by four chains and galvanised swivel. Zipper opening on top of bag.

Filled with cloth scraps.

Bag dimensions: 120 x 35 cm

Bag weight: 20 kg ±5%



Contents
verified by
scanner

KARATE SPORTS BAGS



adiACC080-81

Sports bag with wheels

Markings on three sides.
Sturdy handle and wheels.
Two outer zipper pockets.
Judo or karate models with markings on one side.
Pocket for business card.
Dimensions: 75 x 38 x 38 cm.



adiACC095

ADIACC095 - Karate backbag

Materials: polyester+ PU. Two padded straps and pocket on front.
Printing option: Karate, Budo.
Dimensions: 28x43x28 cm.



adiACC050

Nylon karate bag

"2 in 1" bag, convertible into backpack thanks to two shoulder straps stowed inside the bag. Large opening. Printing KARATE.

Sizes: M (60 x 30 x 30 cm) - L (70 x 35 x 35 cm).



adiACC051K

PU karate bag

"2 in 1" bag, convertible into backpack thanks to two shoulder straps stowed inside the bag. Large opening. «Budo Spirit» range.

Printing options: Karate or Budo.

Sizes : S (50 x 25 x 25 cm) - M (60 x 30 x 30 cm) - L (70 x 35 x 35 cm).



adiACC110-BU

PU Shiny Budo Bag

Unisex Shiny polyester bag, zipper, shoulder handle - BUDO kanji printed on one side.

Colours : Black-White/Bk/Gold-Blue/White.

Sizes: S/ 38*23*16cm-M/38*26.5*20cm-L/46*32*27cm.



adiACC110-CS

PU Shiny Combat Sport Bag

Unisex Shiny polyester bag, zipper, shoulder handle.

COMBAT SPORT printed on one side.

Colours : Black-White/Bk/Gold-Blue/White.

Sizes : S/ 38*23*16cm-M/38*26.5*20cm-L/46*32*27cm



adiACC103

ADIACC103 - Rounded team bag

Materials: PU. Zipper opening on top.

Two pockets with zipper on both sides.

Inside polyester nylon.

Handles and carry-on shoulder strap with five stitchings on.

Printing option: Karate or Budo.

Dimensions: 70 cm length - 32 cm diameter.



adiACC104

ADIACC104 - Nylon team bag

Material: Nylon. Zipper opening on top.

Four metal rivets at bottom.

Two pockets with zipper on both sides. Inside polyester nylon.

Printing option: Karate or Budo.

Dimensions: 55,5x24,5x24,5 cm - 70x35x35 cm.



adiACC105

ADIACC105 - PU team bag

Material: PU. Zipper opening on top. Four metal rivets at bottom.

Two pockets with zipper on both sides. Inside polyester nylon.

Printing option: Karate or Budo.

Dimensions: 55,5x24,5x24,5 cm



adiACC116

ADIACC116 - Carry-on hand bag

Material: PU. Zipper opening on top.

Four metal rivets at bottom. Inside polyester nylon.

Printing option: Karate or Budo.

Dimensions: 44x26,5x19,5 cm.



adiACC120

ADIACC120 - Carry-on shoulder bag

Material: PU. Zipper opening on top.

Four metal rivets at bottom. One opened pocket on side.

Five stitchings on strap. Inside polyester nylon.

Printing option: Karate or Budo.

Dimensions: 46x32x27 cm - 38x30x12 cm.



adidas



taekwondo





TAEKWONDO UNIFORM

Made of 100% stretch Polyester for absolute freedom of movement through innovative elasticized one way effect. Extremely light and structured stretch fabrics with integrated ClimaCOOL® parts in Jacket and Pants for proper air ventilation. Jacket with V-neck. Pants with elasticated waist and additional draw string.
 Sizes : 140 to 220 cm.
 Colours : white / black



TAEKWONDO UNIFORM WITH 3-STRIPES

Made of 100% stretch Polyester for absolute freedom of movement through innovative elasticized one way effect. Extreme light and structured stretch fabrics with integrated ClimaCOOL® parts in Jacket and Pants for proper air ventilation. Jacket with V-neck. Pants with elasticated waist and additional draw string.
 Sizes : 140 to 220 cm.
 Colours : white / black



adiTOCO1 ADI-ECO

ADI-ECO TAEKWONDO UNIFORM

Made of 100% recyclable ECOEVER Polyester. Extreme light and soft fabrics with integrated ClimaCOOL® parts in Jacket and Pants for proper air ventilation. Jacket with V-neck. Pants with elasticated waist and additional draw string.
 Sizes : 140 to 220 cm.
 Colours : white / black



adiTF02 ADI-FIGHTER

TAEKWONDO UNIFORM WITH 3-STRIPES

Made of 100% Polyester. Extrem light fabrics with integrated ClimaCOOL® parts in Jacket and Pants for proper air ventilation. Jacket with V-neck. Pants with elasticated waist and additional draw string.
 Sizes : 140 to 220 cm
 Colours : white / black



adiTF01 ADI-FIGHTER

TAEKWONDO UNIFORM

Made of 100% Polyester. Extrem light fabrics with integrated ClimaCOOL® parts in Jacket and Pants for proper air ventilation. Jacket with V-neck. Pants with elasticated waist and additional draw string.
 Sizes : 140 to 220 cm
 Colours : white / black

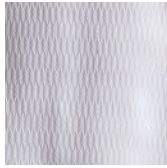


adiTSM01 ADI-SUPER MASTER

TAEKWONDO UNIFORM

Made of 70% Cotton / 30% Polyester. Special fabrics with woven side kick design. Jacket with V-neck. Pants with elasticated waist and additional draw string.
 Sizes : 140 to 220 cm
 Colours : white / black





adiTCH03 ADI-CHAMP III

TAEKWONDO UNIFORM

Made of 35% Cotton / 65% Polyester. Special fabrics with woven structure. Jacket with V-neck. Pants with elasticated waist and additional draw string. Available in white or black V-neck. Colours : white / black. Sizes : 140 to 220 cm.



adiTCH02 ADI-CHAMP II

TAEKWONDO UNIFORM

Made of 55% Cotton / 45% Polyester. Special fabrics with woven striped structure. Jacket with V-neck. Pants with elasticated waist and additional draw string. Available in white or black V-neck. Colours : white / black. Sizes : 110 to 220 cm.



adiTCB01 ADI-CLUB

TAEKWONDO UNIFORM

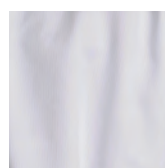
Made of 35% Cotton / 65% Polyester. Special fabrics with woven ribbed structure. Jacket with V-neck. Pants with elasticated waist and additional draw string. Available in black, white or red/black V-neck. Colours : white / black. Sizes : 100 to 220 cm.



adiTCB02 ADI-CLUB

TAEKWONDO UNIFORM

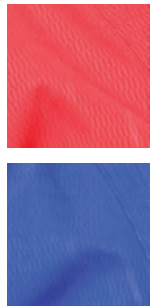
Made of 35% Cotton / 65% Polyester. Special fabrics with woven ribbed structure. Jacket with V-neck. Pants with elasticated waist and additional draw string. Available in white, black or red/black V-neck. Colours : white / black. Sizes : 100 to 220 cm.



adiTS01 ADI-START

TAEKWONDO UNIFORM

Made of 35% Cotton / 65% Polyester. Special fabrics with woven ribbed structure. Jacket with V-neck. Pants with elasticated waist and additional draw string. Available in white or black V-neck. Colour : white. Sizes : 100 to 220 cm.



adiTCC01 ADI-CHAMPION COLOR DOBOK

COLOR TAEKWONDO UNIFORM

Made of 35% Cotton / 65% Polyester. Special fabrics with woven structure. Jacket with V-neck. Pants with elasticated waist and additional draw string. Colours: black, red or blue. Sizes : 100 to 220 cm.





adiTKD0423 SUMMER DOBOK

KIDS SUMMER TAEKWONDO UNIFORM

Made of 20% Cotton / 80% Polyester. Jacket with short sleeves and V-neck. Shorts with elasticated waist and additional draw string.
Colours : white / yellow-blue-red V-neck.
Sizes : 100 to 170 cm.



adiTKD0425 SUMMER DOBOK

KIDS SUMMER TAEKWONDO UNIFORM

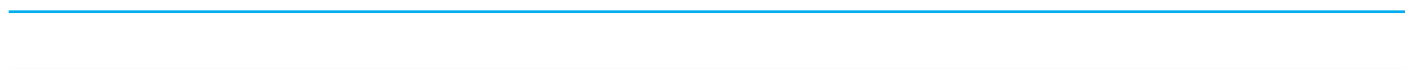
Made of 20% Cotton / 80% Polyester. Jacket with short sleeves and V-neck. Shorts with elasticated waist and additional draw string.
Colours : white / yellow-black V-neck.
Sizes : 100 to 170 cm.



adiTGM01 GRAND MASTER

TAEKWONDO UNIFORM

Made of 55% Cotton / 45% Polyester. Special fabrics with woven structure. Jacket with V-neck. Pants with elasticated waist and additional draw string.
Colours : white.
Sizes : 100 to 220 cm.





adiTLX01

ADILUX

Indoor training shoe made in real leather. Slipper without lace. 3 part TORSION® sole supports the mid foot. Black non markable rubber sole with pivot points under front foot and heel.

Sizes : 36 to 47 1/3

Colours : white / grey - black / grey.



adiTE01

ADI-EVOLUTION II

Indoor training shoe made in real leather. Side parts with air ventilation flex PU. Covered lace closing over the instep. Tongue with extra soft padding for kick training. 3 part TORSION® sole supports the mid foot. White non markable rubber sole with pivot points on front and heel part.

Sizes : 36 to 47 1/3

Colours : white / black / gold.





adiTSS02

ADI-SM II

Indoor training shoe made in real leather. Lace closing around the back foot for tight fitting. Light, flexible and thin rubber sole to beware the bar foot feeling.

White non markable rubber sole with pivot point on front part.

Sizes : 34 to 47 1/3

Colours : white / black - black / white



adiTKE01

ADI-KEE

Indoor training shoe made PU. Lace closing for tight fitting. Additional heel pull part for easy slip in. Light, flexible and thin rubber sole to beware the bar foot feeling. White non markable rubber sole with pivot point on front part.

Sizes : 34 to 47 1/3

Colours : black / silver - white / blue.



adiTKD03

ADI-TKD III

Indoor training shoe made PU. Slipper without lace. A flexible Neopren part for easy slip in covers the instep. Light, flexible and thin rubber sole to beware the bar foot feeling. Non markable rubber sole with integrated pivot point on front part.

Sizes : 30 to 47 1/3

Colours : black / silver / red (tkd03) - white / silver / red (tkd02)



adiTKK01 w/bl

ADI-KICK

The right solution for beginners. A very light shoe with good fit and grippy rubber outsole. Short lace for better fixation on foot.

Sizes : 30 to 47 1/3

Colours : white / black

PROTECTORS



adiTAP01

BODY PROTECTOR REVERSIBLE ADULTS

Body protector for training and competition, reversible. Including shoulder protection.

Lace closing on backside. Made in PU.

Sizes : XS - S - M - L - XL - XXL / 1 - 2 - 3 - 4 - 5 - 6 - 7

Colours : red / white / blue

adiTKP01

BODY PROTECTOR REVERSIBLE KIDS

Body protector for training and competition, reversible. Including shoulder protection. Designed for Kids. Easy and fast velcro closing on back side.

Made in PU.

Sizes : XXS - XS - S - M / 0 - 1 - 2 - 3

Colours : red / white / blue

adiTHG01

HEAD GUARD II

Head Guard, extra light. Fast closing with velcro strap. The soft EVA material assures an easy adjusting to the head shape.

Sizes : XS - S - M - L - XL

Colours : blue - red - white





adiTGG01

GROIN PROTECTOR

Men's groin guard made in PU. Includes anatomical hard plastic cup. Sizes : XS - S - M - L - XL. Colours : white / black



adiTGF01

GROIN PROTECTOR

Women groin guard made in PU. Flexible and anatomical shape for excellent wearing comfort. Sizes : XS to XL. Colour : white



adiBP06

GROIN PROTECTOR

Men's groin guard made in ClimaCOOL® textile for an optimal ventilation. Including anatomical removable cup. Sizes : XS - S - M - L - XL. Colour : white



adiTFP01

FOREARM PROTECTOR

Forearm protector in anatomical shape. Made in PU. Two all around elastic straps with easy velcro closing for tight fitting. Sizes : XXS - XS - S - M - L - XL. Colours : white / black



adiTSP01

SHIN PROTECTOR

Shin protector in anatomical shape. Made in PU. Two all around elastic straps with easy velcro closing for tight fitting. Sizes : XXS - XS - S - M - L - XL. Colours : white / black





adiTSP02

SHIN & INSTEP PROTECTOR

Shin-/Instep protector combination in anatomical shape. Made in PU. Two all around elastic straps with easy velcro closing for tight fitting.
 Sizes : XXS - XS - S - M - L - XL
 Colours : white / black



adiTSK01

SHIN & KNEE PROTECTOR

Shin-/Knee protector combination in anatomical shape. Made in PU. Two all around elastic straps with easy velcro closing for tight fitting.
 Sizes : XXS - XS - S - M - L - XL
 Colours : white / black



adiTES02

SHIN & INSTEP PROTECTOR

Shin-/Instep protector made in Polyester fabrics. Elastized fabrics for tight fitting.
 Sizes : XXS - XS - S - M - L - XL
 Colour : white



adiTES01

SHIN PROTECTOR

Shin protector made in Polyester fabrics. Elastized fabrics for tight fitting.
 Sizes : XXS - XS - S - M - L - XL
 Colour : white



adiTEI01

ELASTIC INSTEP PROTECTOR

Elastic Textile Polyester Fabrics
 Sizes : S - M - L



adiTEF01

ELASTIC FOREAM PROTECTOR

Elastic Textile Polyester Fabrics
 Sizes : XXS - XS - S - M - L - XL
 Colour : white



adiTEA01

ELASTIC ANKLE SUPPORTER

Elastic Textile Polyester Fabrics.
 One size fits all.





adiTCG01

COBRA GLOVES

Open hand gloves made in PU, with velcro closing.
Sizes : 140 to 220 cm
Colours : blue - red

adiTKS02

KICK SHOES

Kick shoes made in PU, with velcro closing.
Product for Asia only.
Sizes : S - M - L - XL
Colours : blue - red - white



adiTFG01

FIGHTER GLOVES

Hand protectors made in PU/Neopren combination.
For training and competition, with open fingers.
Sizes : XS - S - M - L - XL
Colours : white / black

adiTFG02

FIGHTER GLOVES

Hand protectors made in PU/Neopren combination.
For training and competition, with open fingers.
KTA approved for Korea only.
Sizes : XS - S - M - L - XL
Colours : white / black



adiTFS01

FOOT SOCKS

Foot protectors made in PU/Textile combination. For training and competition.
Sizes : XS - S - M - L - XL
Colours : white / black



adiTFS02

FOOT SOCKS

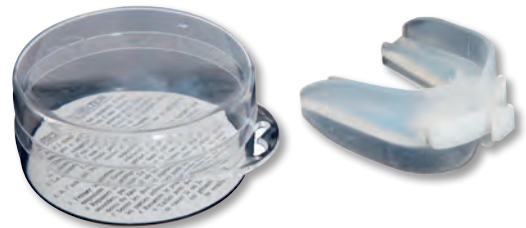
Foot protectors made in PU/Textile combination. For training and competition.
Korean Taekwondo Federation approved for Korea only.
Sizes : XS - S - M - L - XL
Colours : white / black



adiBP09

SINGLE MOUTH GUARD

Polyolyfin Elastomer material thermoformable
Sizes : JR & SR



adiBP10

DOUBLE MOUTH GUARD

Polyolyfin Elastomer material thermoformable
Size : SR





adiBAC01

FOCUS MITT SHORT

Curved Focus Mitts made in PU3G Innovation. Amara Japanese fabric palm. EVA foam padding with Polyflex bars. Padded palm. Scratch adjustable wrist strap. Grip ball. AeroPunch technology for optimal protection and impact absorption. Sizes : Std. Colour: black



adiTHKP01

DOUBLE HAND KICK PAD

Kick Pad for Power-Kick training, made in PU. Two grip bars for easy handling. Curved shape for optimal shock absorption during kick training. Sizes : 42 x 24 x 9 cm Colour: black



adiTSP01

STRIKING PAD LARGE

Large Kick Pad for Body Kick training, made in extra strong PU. Nylon strap holds. Filled with aero foam padding with side vents to provide vaccum effect. Zip closing system. Sizes : 60 x 50 x 12 cm Colour: black



adiTST01 - adiTST02

TRAINING MITT SINGLE

Single Hand Mitt for speed kick training, made in PU3G Innovation. Nylon strap handle.
 Sizes : S and L
 Colours : black / white - white / black



adiTDT01 - adiTDT02

TRAINING MITT DOUBLE

Double Hand Mitt for speed kick training, made in PU3G Innovation. Nylon strap handle.
 Sizes : S and L
 Colours : black / white - white / black



adiTKT02

TRAINING MITT DOUBLE KIDS

Extra small Double Hand Mitt for speed kick training, made in PU. Nylon strap handle.
 Sizes : XS
 Colours : yellow / red - blue / red - black / green



adiTST03 - adiTST04

TRAINING MITT SINGLE

Single Hand Mitt for speed kick training, made in PU. Nylon strap handle.
 Sizes : S and L
 Colours : black - red - blue



adiTDT03 - adiTDT04

TRAINING MITT DOUBLE

Double Hand Mitt for speed kick training, made in PU. Nylon strap handle.
 Sizes : S and L
 Colours : black / red - red / blue - blue / red



adiTST05

TRAINING MITT SINGLE

Single Hand Mitt for speed kick training, made in Soft vinyl material. Inside molded foam for better durability.
 Sizes : M
 Colours : black.



adiTBB01

BLACK BELT
 100% cotton.
 Sizes : 220 - 340 cm
 Width : 4,3 cm (adiTBB01)
 5 cm (adiTBB04)
 Colours : black / white

adiTBB04



adiTBB02

COMPETITION BLACK BELT SINGLE WRAP
 100% cotton.
 Sizes : 220 to 340 cm (110 - 170 cm) -
 Width : 4,3 cm
 Colours : black / white



adiTBB03

MASTER DELUXE BLACK BELT
 100% cotton. Heavy and thick quality.
 Sizes : 220 to 340 cm - Width : 5 cm
 Colours : black / gold



adiTPB01

POOM BELT
 100% cotton.
 Sizes : 220 to 340 cm - Width : 4,3 cm
 Colours : black / red



adiTDT05

TRAINING MITT DOUBLE
 Double Hand Mitt for speed kick training, made in Soft vinyl material. Inside molded foam for better durability.
 Sizes : M
 Colours : black.



adiTCB01

COLOURED BELT
 100% cotton.
 Sizes : 220 to 340 cm - Width : 4,3 cm
 Colours : black / white - black / gold - red - brown - blue - green - yellow - white



adiTCB02

COLOURED STRIPED BELT
 100% cotton.
 Sizes : 220 to 340 cm - Width : 4,3 cm
 Colours : green / blue - yellow / green - white / yellow - red / black - blue / red - blue / brown

TAEKWONDO SPORTS BAGS



adiACC110-CS

PU Shiny Combat Sport Bag

Material : Shiny polyester bag, zipper, shoulder handle.
COMBAT SPORT printed on one side.

Colours : Black-White/Bk/Gold-Blue/White.

Sizes : S/ 38*23*16cm-M/38*26.5*20cm-L/46*32*27cm

adiACC103

ADIACC103 - Rounded team bag

Material : PU. Zipper opening on top.

Two pockets with zipper on both sides.

Inside polyester nylon.

Handles and carry-on shoulder strap with five stitchings on.

Printing option: Budo.

Dimensions: 70 cm length - 32 cm diameter.



adiACC104

ADIACC104 - Nylon team bag

Material : Nylon. Zipper opening on top.

Four metal rivets at bottom.

Two pockets with zipper on both sides. Inside polyester nylon.

Printing option: Budo.

Dimensions: 55,5x24,5x24,5 cm - 70x35x35 cm.



adiACC105

ADIACC105 - PU team bag

Material : PU. Zipper opening on top. Four metal rivets at bottom.

Two pockets with zipper on both sides. Inside polyester nylon.

Printing option: Budo.

Dimensions: 55,5x24,5x24,5 cm



adiACC116

ADIACC116 - Carry-on hand bag

Material : PU. Zipper opening on top.

Four metal rivets at bottom. Inside polyester nylon.

Printing option: Budo.

Dimensions: 44x26,5x19,5 cm.



adiACC120

ADIACC120 - Carry-on shoulder bag

Material : PU. Zipper opening on top.

Four metal rivets at bottom. One opened pocket on side.

Five stitchings on strap. Inside polyester nylon.

Printing option: Budo.

Dimensions: 46x32x27 cm - 38x30x12 cm.

BRAZIL LINE



ADITJJ001

Cotton»country» t-shirt S/S

Material: 100% cotton. Knitted fabric with round neck. Regular fit. Short sleeves.

Colour : White

Sizes : XS to 2XL



ADITJJ061

Cotton t-shirt S/S

Material: 100% cotton. Knitted fabric with round neck. Regular fit cut. Stripes on shoulders. Short sleeves. Large printing at back.

Colour : White

Sizes : XS to 2XL



ADITJJ062

Cotton t-shirt S/S

Material: 100% cotton. Knitted fabric with round neck. Slim fit cut. Stripes on shoulders. Short sleeves.

Large printing on front.

Colour : Blue

Sizes : XS to 2XL



ADITJJ033

Polyester rashguard L/S

Materials: 92% polyester - 8% spandex.
Round neck. Close fit cut. Stripes on sides
Long sleeves. Jiu Jitsu printing in Japanese
on front.

Colour : Black
Sizes : XS to2XL.



ADITJJ012

Polyester sleeveless rashguard

Materials: 90% polyester - 10% spandex.
Round neck. Close fit cut. Stripes and mesh
on sides Long sleeves. Jiu Jitsu printing in
full letters at back. Item for ASIA-USA.

Colours : Black-White-Blue
Sizes : XS to2XL.



ADITS331

Polo «country» S/S

Material: 100% cotton pique material,
rugged dry hand feel. Double layer interior
neck taping and reinforced side gussets.
Slim fit / polo traditionnal cut. Brazil
country flag on side.

Colours : White-Blue
Sizes : XS to2XL.



ADITJJ073

Close fit short

Materials: 92% polyester - 8% spandex.
Close fit cut. Jiu-Jitsu printing in full letters
on one side & adidas logo on the other side.
For ASIA-USA.

Colours : Black-White-Blue



ADISJJ001

Hoody sweater L/S

Materials : 85% cotton - 15% polyester. Super
soft waffle, lined drawstring hood, front side
pockets, muscle fit. 3 stripes on 2/3 of sleeves.
Hood. Brazilian flag on right arm and adidas
logo on left arm. Elasticated waist and wrists.
Lace-up tightening at opening of «V» cut-neck.
Large print on front. Two opened side pockets
at front.

Colour : White



ADICJJ001

Cap

Material: 100% cotton
Colour : White
One size fits all.
(Item for Asia - USA)



TS001M-069

Cotton «Warriors» T-shirt S/S
Material : 100% cotton. Round neck. Regular & unisex cut.
Large artwork in Japanese style at back.
Short sleeves.
Colour : White
Sizes : XS to 2XL.



TS001M-050

Cotton «Warriors» T-shirt S/S
Material : 100% cotton. Round neck. Regular & unisex cut.
Large artwork in Japanese style at back.
Short sleeves.
Colour : Black
Sizes : XS to 2XL.



TS001M-051

Cotton «Warriors» T-shirt S/S
Material : 100% cotton. Round neck. Regular & unisex cut.
Large artwork in Japanese style at back.
Short sleeves.
Colour : White
Sizes : XS to 2XL.



TS001M-053

Cotton «Warriors» T-shirt S/S
 Material : 100% cotton. Same artwork as TS001M-051 with large round neck and lady cut.
 Colours : White-Black
 Sizes : XS to2XL.



TS001M-037

Cotton «Warriors» T-shirt S/S
 Material : 100% cotton. Round neck. Regular & unisex cut. Large artwork in Japanese style at back. Short sleeves.
 Colour : Black
 Sizes : XS to2XL.



TS001M-055

Cotton «Warriors» T-shirt S/S
 Material : 100% cotton. Same artwork as TS001M-037 with large round neck and lady cut.
 Colours : White-Black
 Sizes : XS to2XL.



TS001-CS9

Cotton T-shirt S/S
 Material : 100% cotton. Round neck. Regular & unisex cut.
 Large artwork in Japanese style at back. Short sleeves.
 Colour : White
 Sizes : XS to2XL.



TS001-CS10

Cotton T-shirt S/S
 Material : 100% cotton. Round neck. Regular & unisex cut.
 Large artwork in Japanese style at back. Short sleeves.
 Colour : Black
 Sizes : XS to2XL.



TS001-CS11

Cotton T-shirt S/S
 Material : 100% cotton. Round neck for men. Regular cut. Small «Budo Spirit» logo printed at back. Plain area on front & back for printing of club logo. Short sleeves.
 Colour : White
 Sizes : XS to2XL.



ADITS311

Polyester close fit t-shirt S/S

Materials: 92% polyester - 8% spandex.
 Round neck. Close fit cut. Mesh on sides and at back/upper part of t-shirt. Stripes on sides. Short sleeves. Budo printing in Japanese at back and BudoSpirit signature at bottom/right/back side of t-shirt. Climalite logo
 Colour : White
 Sizes : XS to2XL.



ADITS411-01

Polycotton slimfit t-shirt S/S

Materials: 92% polyester - 8% spandex. Round neck. Slim fit cut. Stripes on one side. Short sleeves. Budo printing in Japanese at back under neck and BudoSpirit signature at bottom/right/back side of t-shirt. Climalite logo.
 Colours : White/Black - White/Black/Red
 Sizes : XS to2XL.



ADITS049

Polycotton slimfit t-shirt S/S

Material: 50% cotton 50% polyester. Round neck. Slim fit cut. Short sleeves. Judo (ADITS024) or Karate (ADITS025) + Countries flags executed as large printing on front.
 Colours : Black - Blue - Ice Grey
 Sizes : XS to2XL.



ADITS332

Polo «country» S/S

Material: 100% cotton pique material, rugged dry hand feel. Double layer interior neck taping and reinforced side gussets. Slim fit / polo traditionnel cut.
 Country flags: Japan (judo) and Japan (Karate).
 Possibility of SMU according to MOQ
 Colour : White
 Sizes : XS to2XL.

**ADITS024 / 25 / 26****Polycotton slimfit t-shirt S/S**

Material: 100% cotton - Weight: 220 grs/m2. Round neck. Slim fit cut. Short sleeves. Judo (ADITS024) or Karate (ADITS025) or Taekwondo (ADITS026) large printing at back.

Colour : White - black - grey.

Sizes : XS to2XL.



ADISBU03

Hoody sweater L/S

Materials : 85% cotton - 15% polyester. Super soft waffle, lined drawstring hood, front side pockets, muscle fit. Full lenght zipper. «Budo» embroidered in Japanese and stitched letters at back of jacket plus direct embroidery. Std adidas Performance logo embroidered on left chest.

Colour : White
 Sizes : XS to2XL.



JK021-03

Polar fleece jacket L/S

Materials : polyester 100% polar fleece material. Front side pockets, muscle fit. ClimaWARM logo on front left side of jacket. BudoSpirit signature at bottom/right/back.

Colour : Black
 Sizes : XS to2XL.



ADIP01

Medium stadium parka

Materials: 100% nylon (body) - 100% polyester (lining) - 98% acrylic / 2% spandex (rib) - 80% duck down (filling). Unisex cut. Full zipped hooded jacket. Side pockets. BudoSpirit signature at bottom/right/back.

Colours : Black-Blue
 Sizes : 2XS to2XL.
 (Item for Asia)



ADIP02

Long warm-up parka

Materials: 100% nylon (body) - 100% polyester (lining) - 98% acrylic / 2% spandex (rib) - 80% duck down (filling). Unisex long cut. Full zipped hooded jacket. Side pockets. BudoSpirit signature at bottom/right/back.

Colour : Black
 Sizes : 2XS to2XL.
 (Item for Asia)



ADITB24

Men teddy jacket

Mixed wool and polyester 400 grs/m2 material for main body part. Strong PU material at sleeves. Unisex, wide and comfortable cut. Round neck. Elasticated wrists and waist. Pockets on sides. Closing system by buttons. Colours : Black/White. Sizes : XS to XXXL.



adiWS1

100% polyester & rubber outside sole. Nylon stitchings. Anti-slip sole - strong polyester outside cover. WUSHU marking on side. Three stripes and Chinese print in between stripes. Training shoes for the practice of Wushu. Colors : white/black - black/gold. Sizes : 35 to 45 (full sizes).



adiSH1

Indoor Shoes

100% polyester material. Comfortable and light mesh material. Elastic at heel for tightening. Ideal for walking between locker-room and dojo. Colors : black/white - black/dark grey. Sizes : 3XS to XL.



arthur is all in

NERA

© 2012 adidas AG. adidas, the 3-Stripes logo and the 3-Stripes mark are registered trademarks of the adidas Group.



ACCESSORIES

- 1. adiACC001 Judo and adiACC002 KARATE. Mini-uniform. Height : 12 cm.
 - 2. adiACC05J (judo) and adiACC06K (karate). Key-chain small mitts. Length : 6 cm.
 - 3. adiACC010. Mini boxing gloves. Length : 6 cm.
 - 4. adiACC21 - adiACC22 - adiACC23 - adiACC24 -adiACC25. Key-chain. 100% rubber and metal ring. One size fits all.
-
-

NOTES